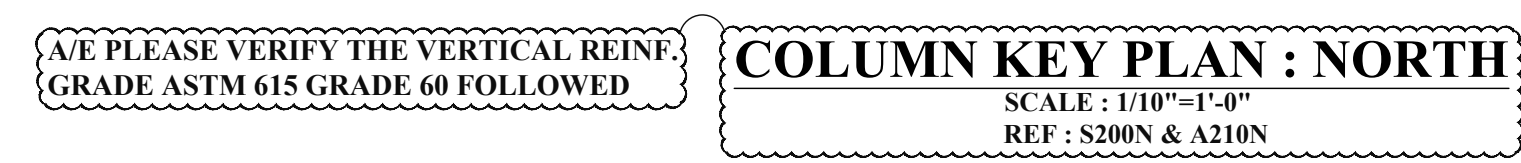
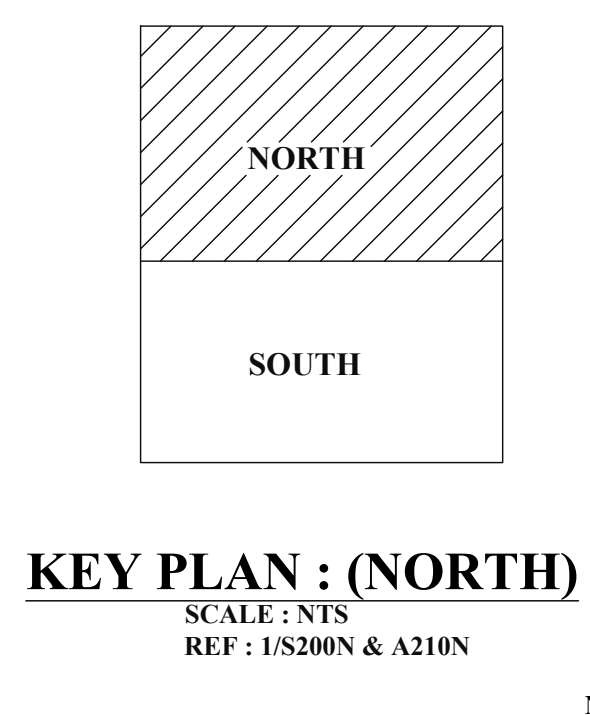


FOR CONTINUATION REFER FOUNDATION(SOUTH) DRAWING

ABBREVIATIONS	
TOP	-
BOTTOM	BOT
TOP&BOTTOM	T&B
CONTINUOUS	CONT
FACE BAR	-
CORNER BAR	COR
VERTICAL	VERT
HORIZONTAL	HOR
STIRRUPS	STIRR
EACH WAY	EW
EACH FACE	EF
INNER FACE	IF
OUTER FACE	OF
EACH SIDE	ES
MASONRY	M
DOWEL	DWL
DOWEL/VERTICAL	D/V
TRANSVERSE	TRANS
LONG WAY BAR	LW
SHORT WAY BAR	SW



(WALL)

SIZE	4000 PSI	
	TOP	OTHER
#3	24"	19"
#4	32"	25"
#5	40"	31"
#6	48"	37"
#7	70"	54"
#8	80"	62"
#9	91"	70"
#10	102"	79"

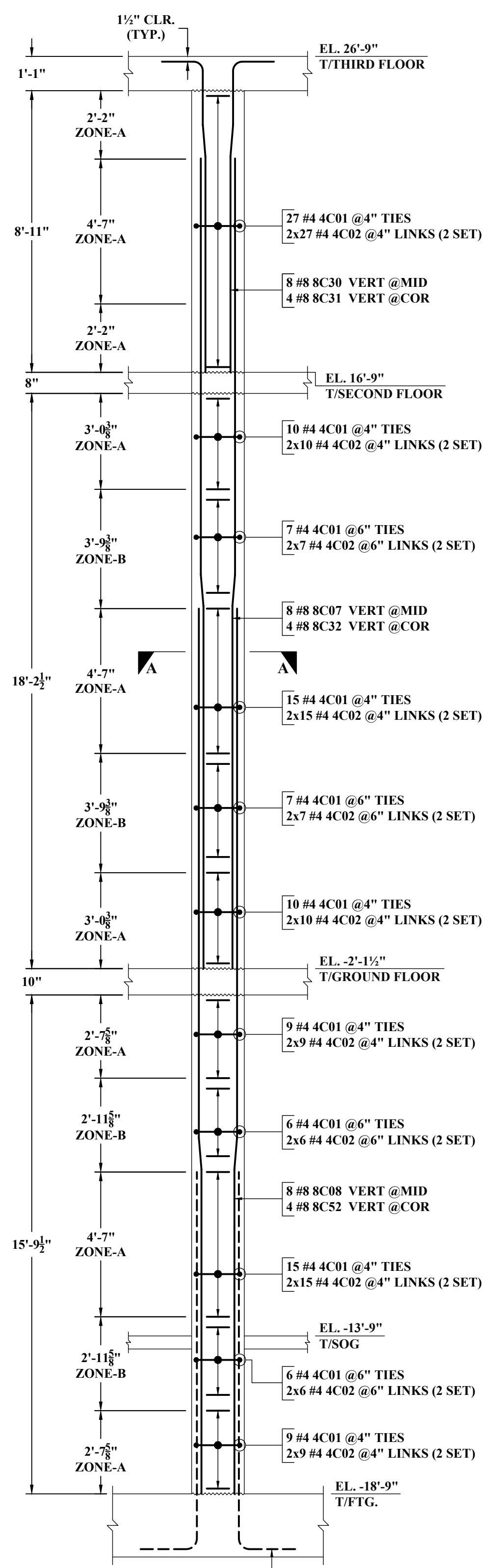
(COLUMN)

SIZE	5000 PSI	
	TOP	OTHER
#3	22"	17"
#4	29"	22"
#5	36"	28"
#6	43"	33"
#7	63"	49"
#8	72"	55"
#9	81"	63"
#10	91"	70"

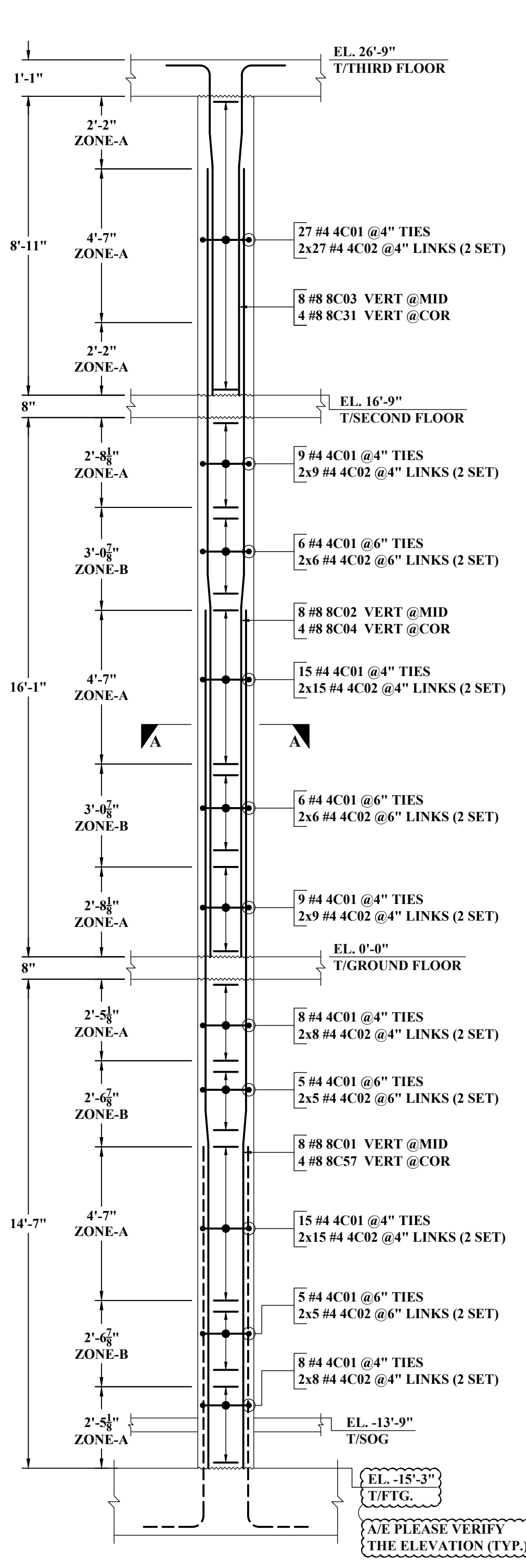
- NOTES:-**
- TYPICAL CLEARANCES  
A). TOP - 1/2"  
B). TIES - 1/2"
  - A/E PLEASE VERIFY THE ALL CLOUDED ITEMS
  - PROVIDE FIELD CUT AS REQUIRED LOCATIONS
  - BAR TO BE PLACED AT EQUAL SPACING U.O.N.
  - TILT HOOK TO ACCOMMODATE THE COVER, IF NEED

**ALL BARS IN THIS DRAWING ASTM A615 GRADE 60 BLACK UNCOATED**

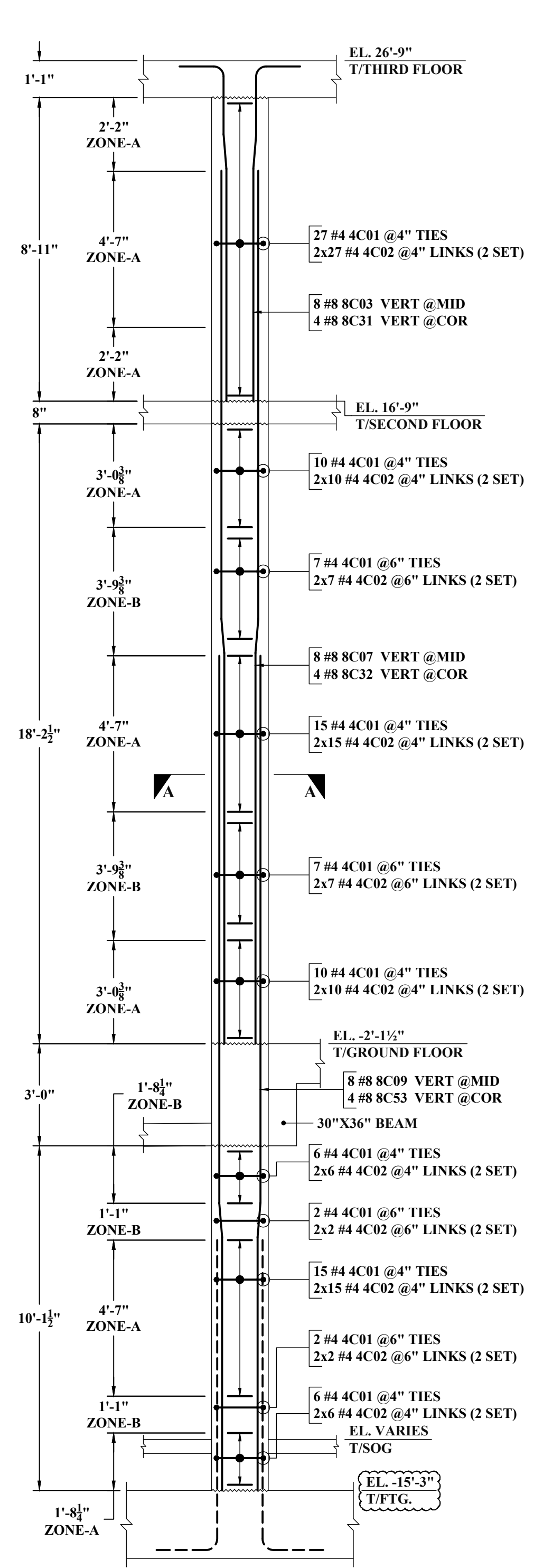
NOTE: REINFORCING STEEL PLACING DRAWINGS TO BE USED ONLY IN CONJUNCTION WITH CONTRACT DRAWINGS AND SPECIFICATIONS. ELEVATIONS & DIMENSIONS SHOWN ON THIS DRAWING ARE FOR VERIFICATION BY THE EOR OR FOR DETAILING PURPOSES ONLY AND SHOULD NOT BE USED FOR CONSTRUCTION UNLESS VERIFIED BY THE ARCHITECT, ENGINEER OF RECORD, OR CONTRACTOR.



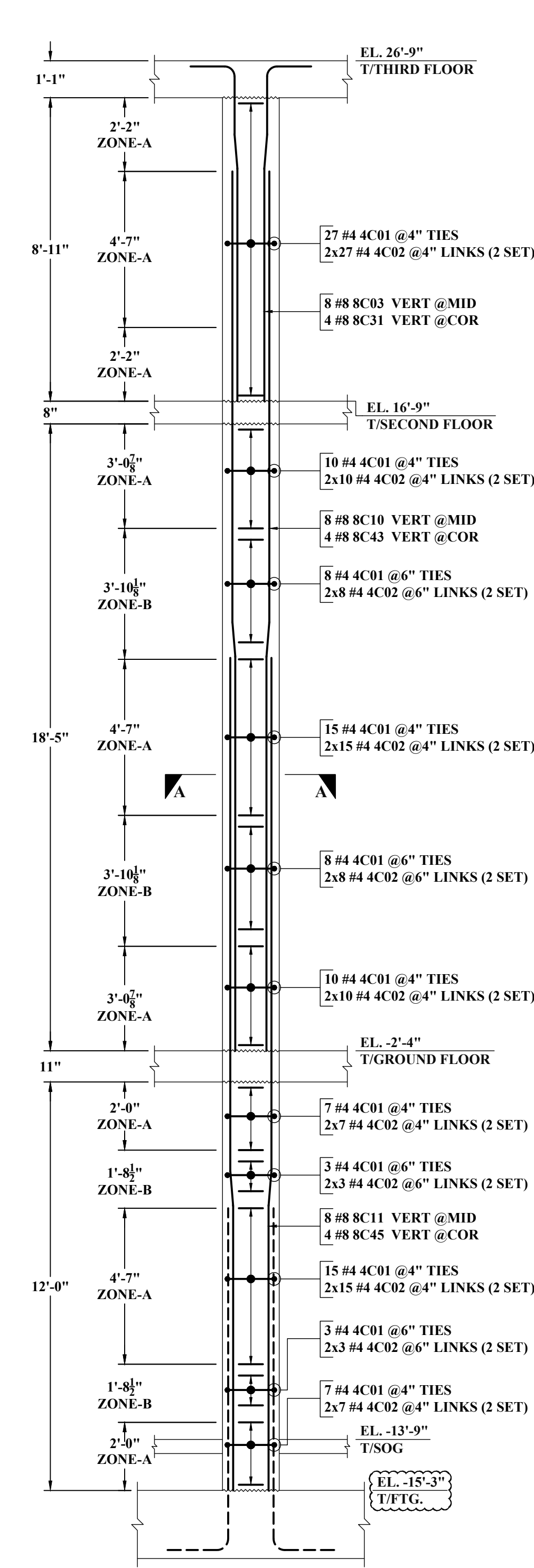
**COLUMN - CC1**  
 SCALE: 1/3"=1'-0"  
 REF: S200N & 5/S401



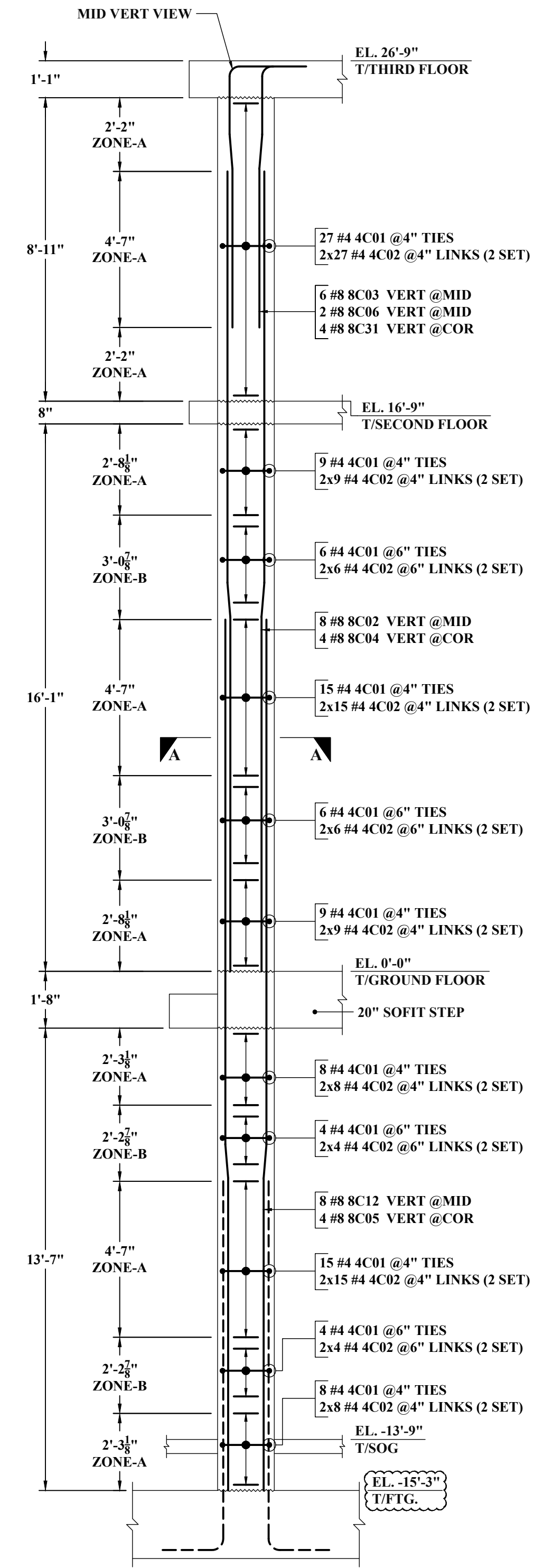
**COLUMN - CC2**  
 SCALE: 1/3"=1'-0"  
 REF: S200N & 5/S401



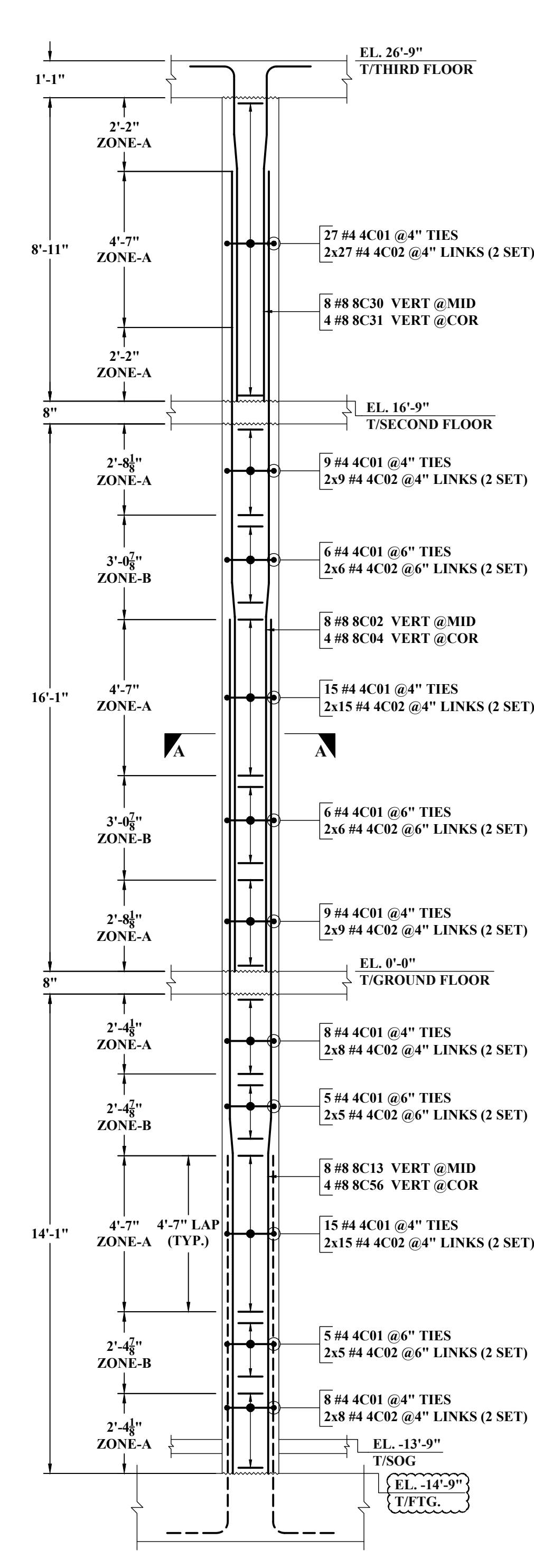
**COLUMN - CC3**  
 SCALE: 1/3"=1'-0"  
 REF: S200N & 5/S401



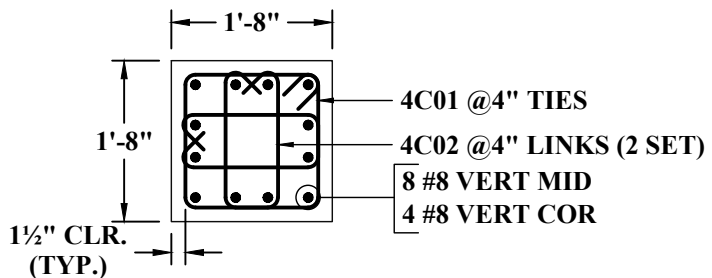
**COLUMN - CC4**  
 SCALE: 1/3"=1'-0"  
 REF: S200N & 5/S401



**COLUMN - CC5**  
 SCALE: 1/3"=1'-0"  
 REF: S200N & 5/S401



**COLUMN - CC6**  
 SCALE: 1/3"=1'-0"  
 REF: S200N & 5/S401



**PLAN VIEW: A-A**  
 SCALE: 1/2"=1'-0"  
 REF: 2/S401

(WALL)

SIZE	4000 PSI	
	TOP	OTHER
#3	24"	19"
#4	32"	25"
#5	40"	31"
#6	48"	37"
#7	70"	54"
#8	80"	62"
#9	91"	70"
#10	102"	79"

(COLUMN)

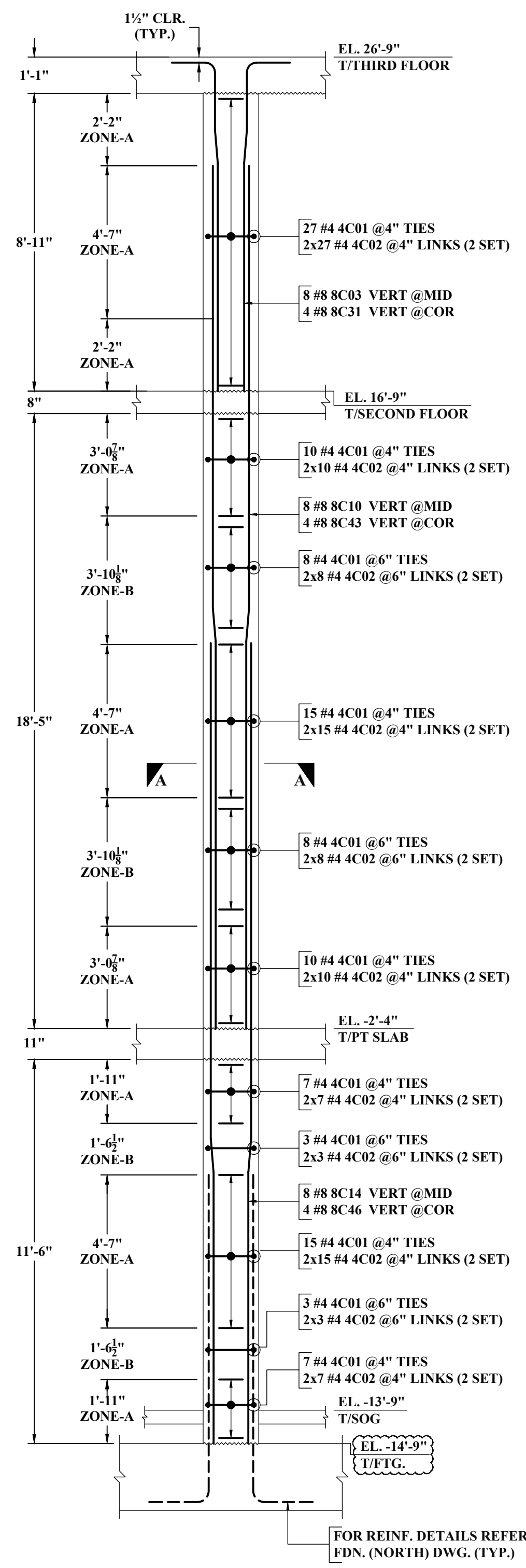
SIZE	5000 PSI	
	TOP	OTHER
#3	22"	17"
#4	29"	22"
#5	36"	28"
#6	43"	33"
#7	63"	49"
#8	72"	55"
#9	81"	63"
#10	91"	70"

ABBREVIATIONS

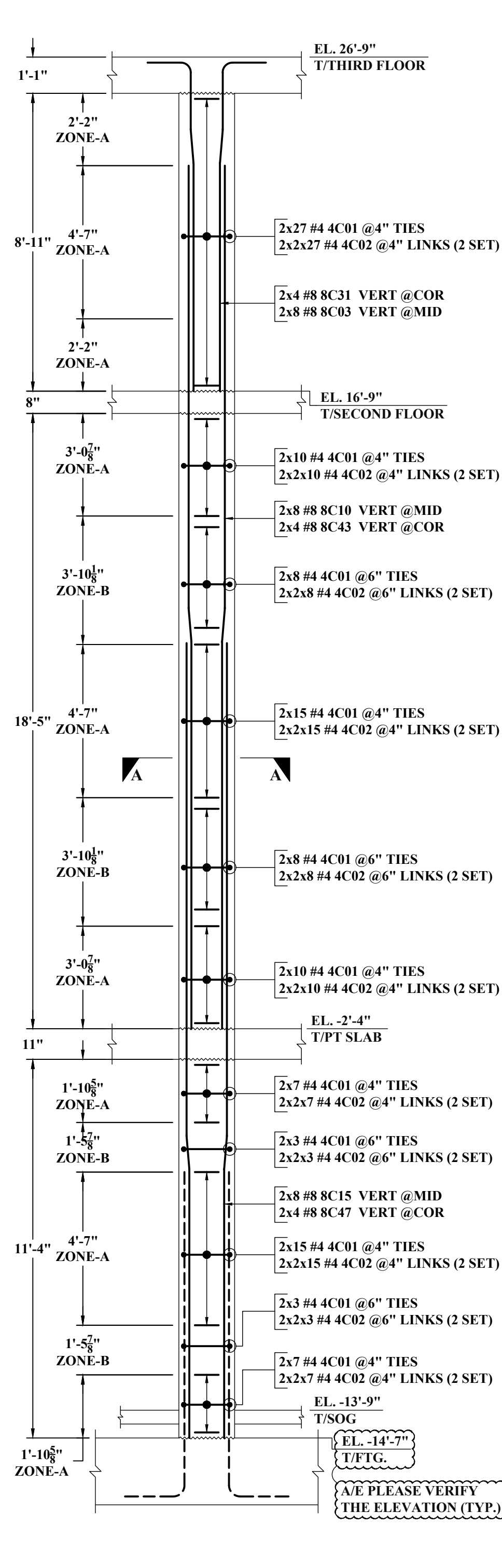
ABBREVIATION	MEANING
BOTTOM	BOT
TOP/BOTTOM	T&B
VERTICAL	VERT
HORIZONTAL	HOR
EACH WAY	EW
EACH FACE	EF
INNER FACE	IF
OUTER FACE	OF
EACH SIDE	ES
DOWEL	DWL
DOWEL/VERTICAL	D/V
LONG WAY BAR	LW
SHORT WAY BAR	SW

- NOTES:-**
- TYPICAL CLEARANCES  
 A). TOP - 1/2"  
 B). TIES - 1 1/2"
  - A/E PLEASE VERIFY THE ALL CLOUDED ITEMS
  - PROVIDE FIELD CUT AS REQUIRED LOCATIONS
  - BAR TO BE PLACED AT EQUAL SPACING U.O.N.
  - TILT HOOK TO ACCOMMODATE THE COVER, IF NEED

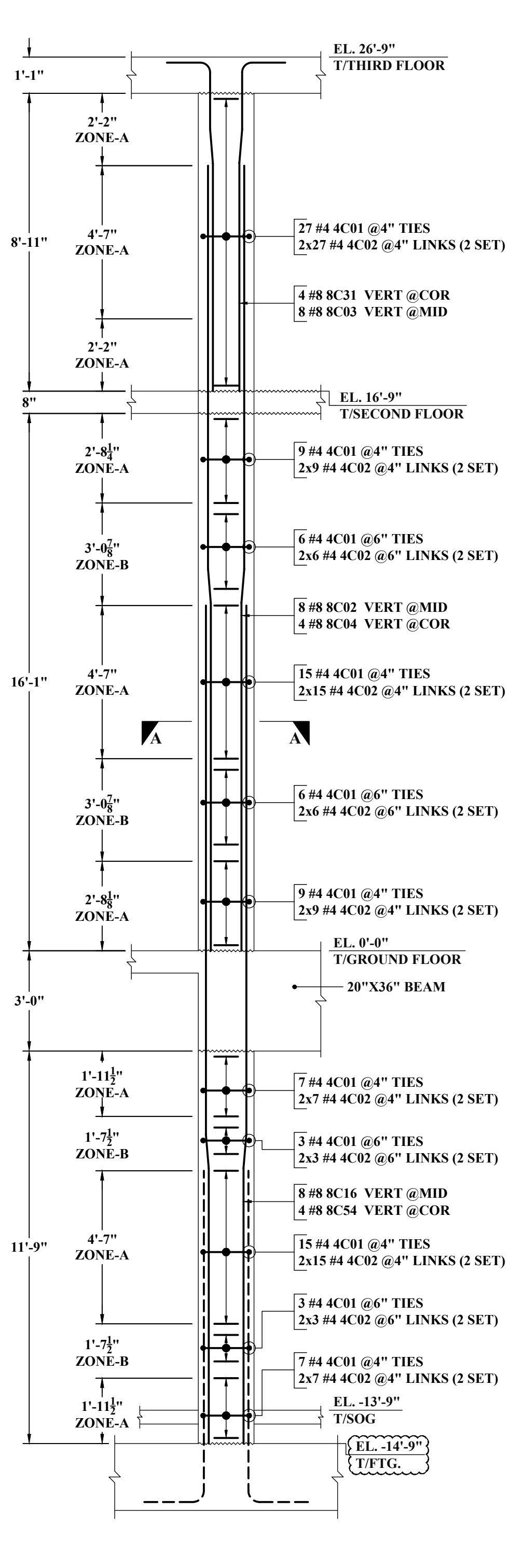
**ALL BARS IN THIS DRAWING ASTM A615 GRADE 60 BLACK UNCOATED**



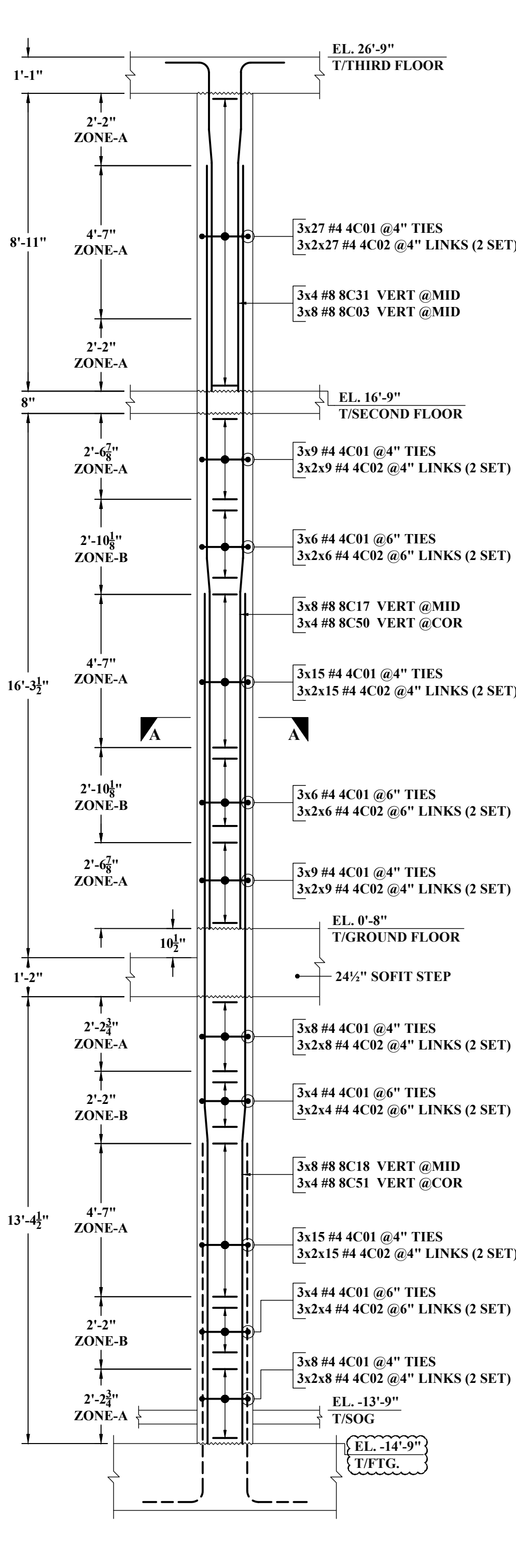
(SIZE : 20"X30")  
**COLUMN - CC1F**  
SCALE : 1/3"=1'-0"  
REF : S200N & 5/S401



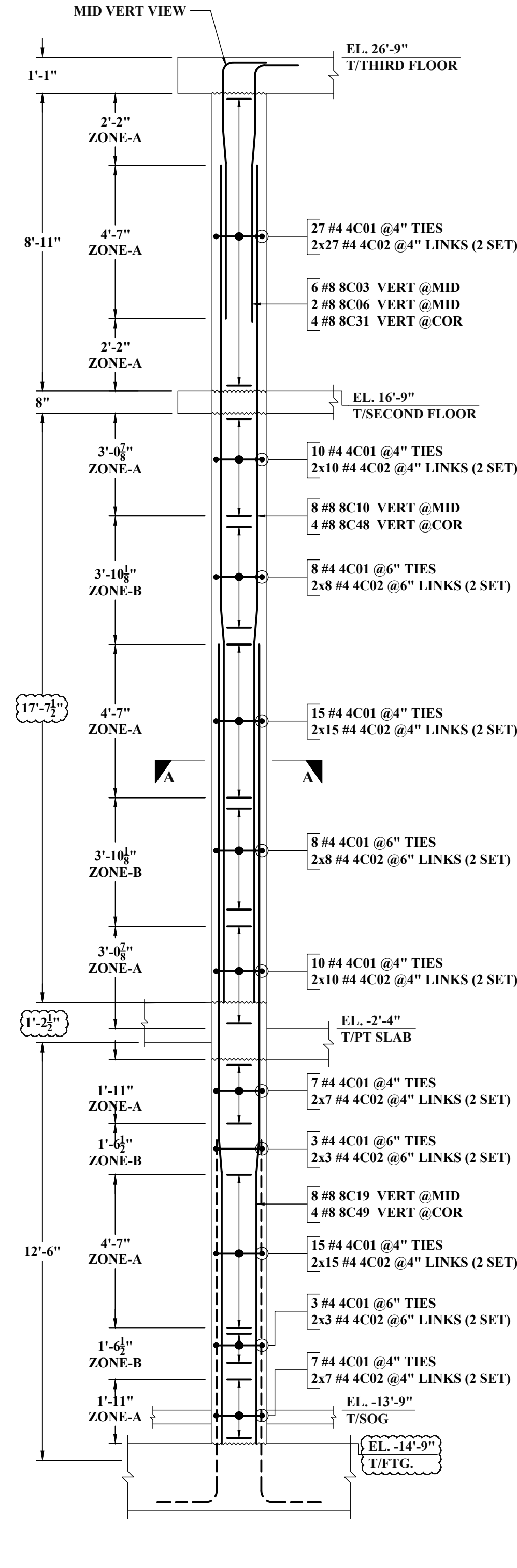
(2 LOCATIONS)  
(SIZE : 20"X30")  
**COLUMN - CC1G**  
SCALE : 1/3"=1'-0"  
REF : S200N & 5/S401



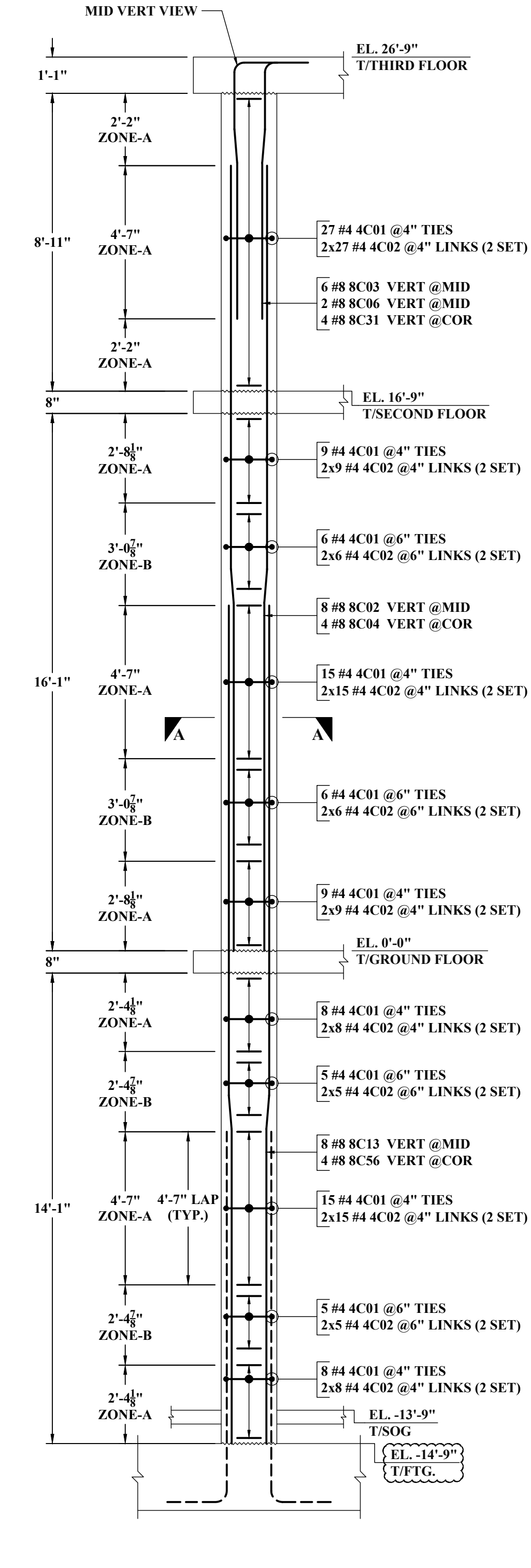
(SIZE : 20"X30")  
**COLUMN - CC1H**  
SCALE : 1/3"=1'-0"  
REF : S200N & 5/S401



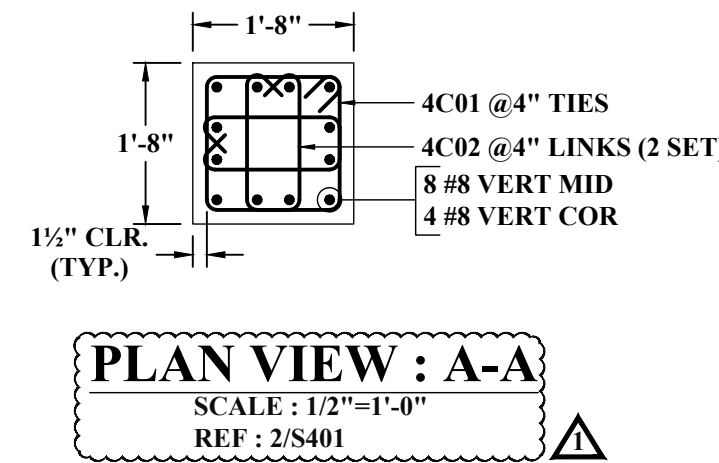
(3 LOCATIONS)  
(SIZE : 20"X30")  
**COLUMN - CC1J**  
SCALE : 1/3"=1'-0"  
REF : S200N & 5/S401



(SIZE : 20"X30")  
**COLUMN - CC1K**  
SCALE : 1/3"=1'-0"  
REF : S200N & 5/S401



(SIZE : 20"X30")  
**COLUMN - CC1L**  
SCALE : 1/3"=1'-0"  
REF : S200N & 5/S401



(WALL)

**LAP SCHEDULE (CLASS-B)**  
REF: S/S101A

SIZE	4000 PSI	
	TOP	OTHER
#3	24"	19"
#4	32"	25"
#5	40"	31"
#6	48"	37"
#7	70"	54"
#8	80"	62"
#9	91"	70"
#10	102"	79"

(COLUMN)

**LAP SCHEDULE (CLASS-B)**  
REF: S/S101A

SIZE	5000 PSI	
	TOP	OTHER
#3	22"	17"
#4	29"	22"
#5	36"	28"
#6	43"	33"
#7	63"	49"
#8	72"	55"
#9	81"	63"
#10	91"	70"

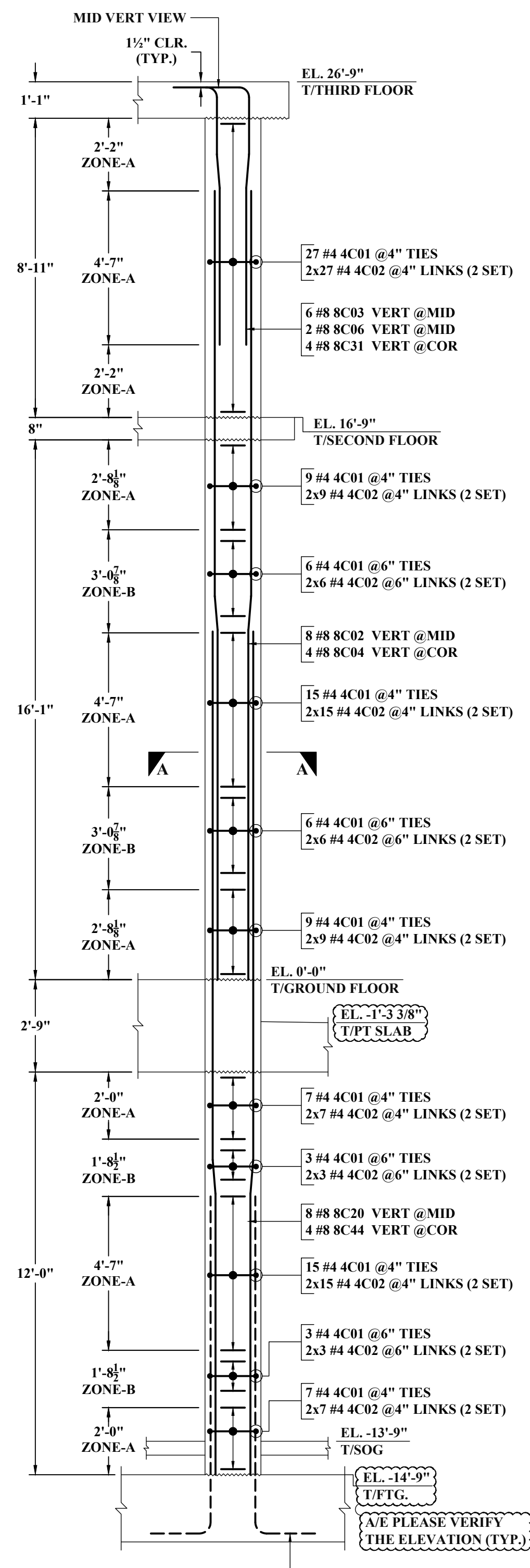
ABBREVIATIONS

BOTTOM	BOT
TOP/BOTTOM	T&B
VERTICAL	VERT
HORIZONTAL	HOR
EACH WAY	EW
EACH FACE	EF
INNER FACE	IF
OUTER FACE	OF
EACH SIDE	ES
DOWEL	DWL
DOWEL/VERTICAL	D/V
LONG WAY BAR	LW
SHORT WAY BAR	SW

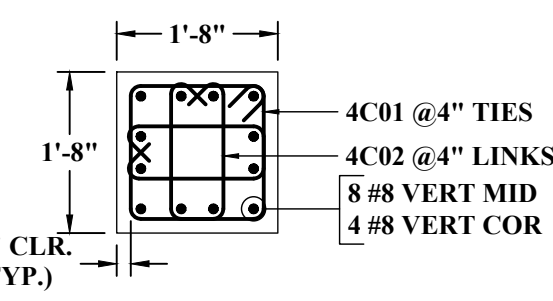
- NOTES:-**
- TYPICAL CLEARANCES  
A). TOP - 1/2"  
B). TIES - 1 1/2"
  - A/E PLEASE VERIFY THE ALL CLOUDED ITEMS
  - PROVIDE FIELD CUT AS REQUIRED LOCATIONS
  - BAR TO BE PLACED AT EQUAL SPACING U.O.N.
  - TILT HOOK TO ACCOMMODATE THE COVER, IF NEED

**ALL BARS IN THIS DRAWING ASTM A615 GRADE 60 BLACK UNCOATED**

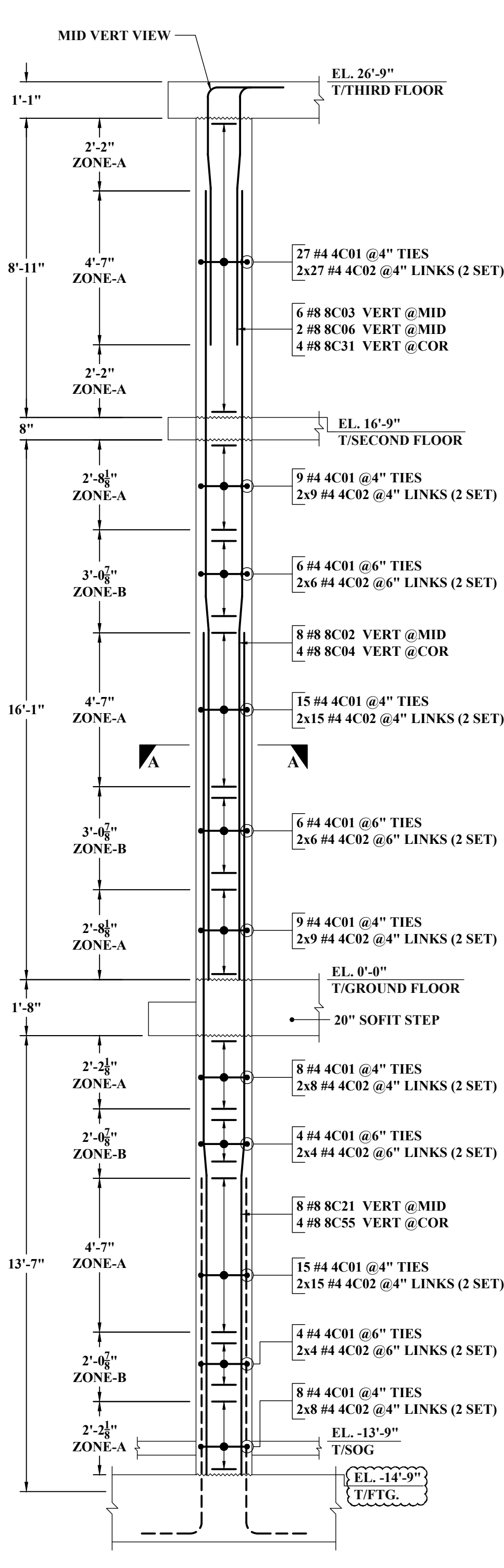




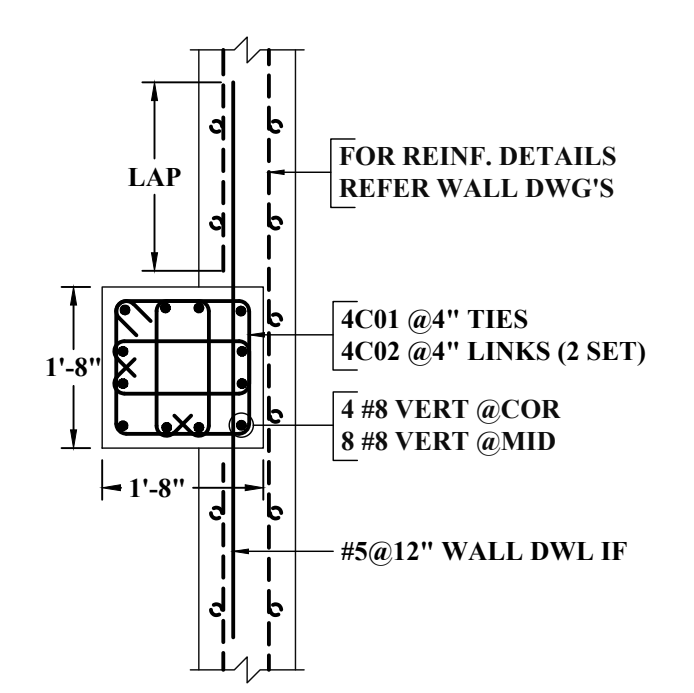
SIZE : 20"X20"  
**COLUMN - CC1M**  
 SCALE : 1/3"=1'-0"  
 REF : S200N & 5/S401



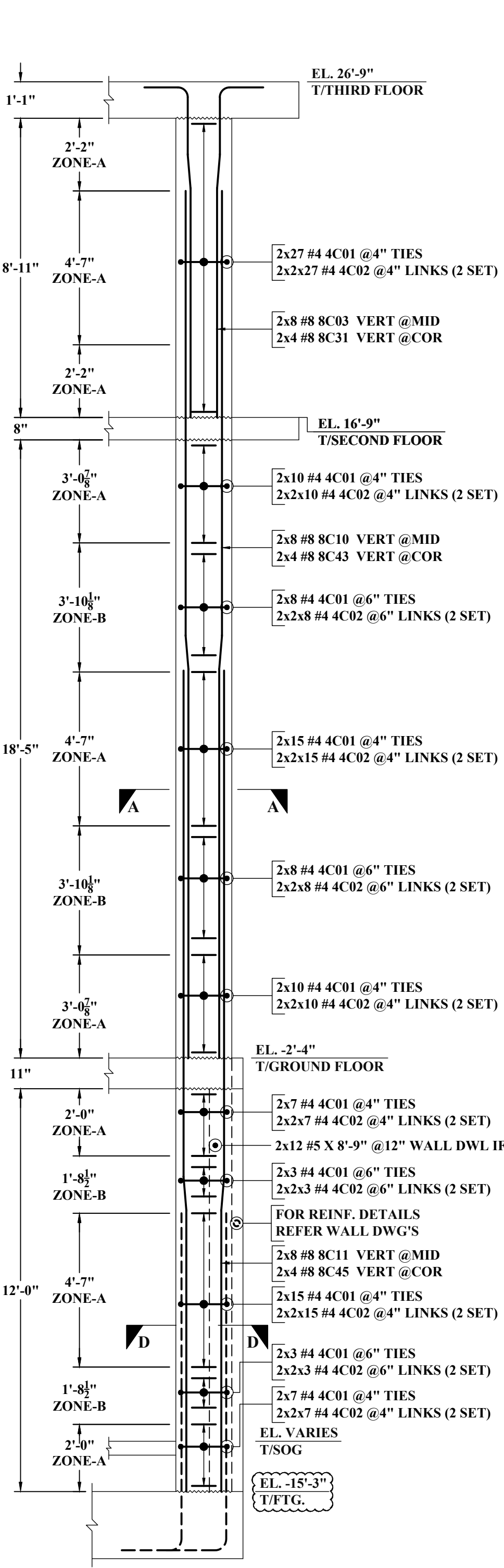
SCALE : 1/2"=1'-0"  
**PLAN VIEW : A-A**  
 REF : 2/S401



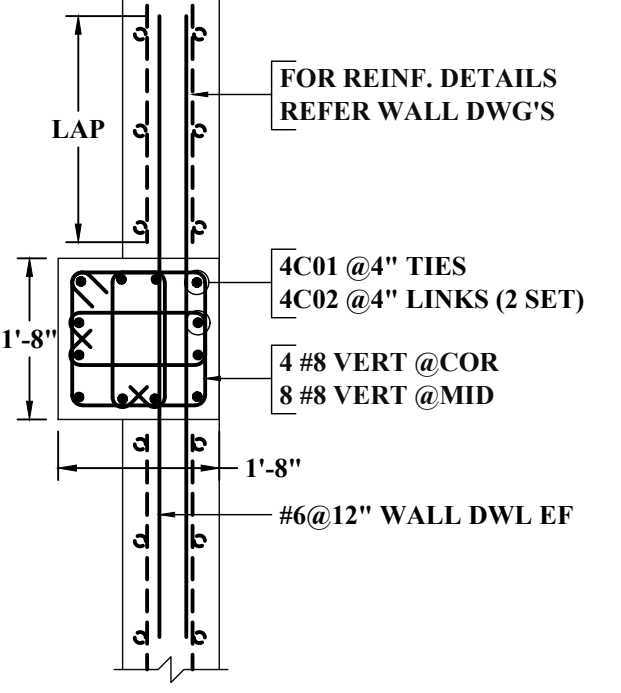
SIZE : 20"X20"  
**COLUMN - CC1N**  
 SCALE : 1/3"=1'-0"  
 REF : S200N & 5/S401



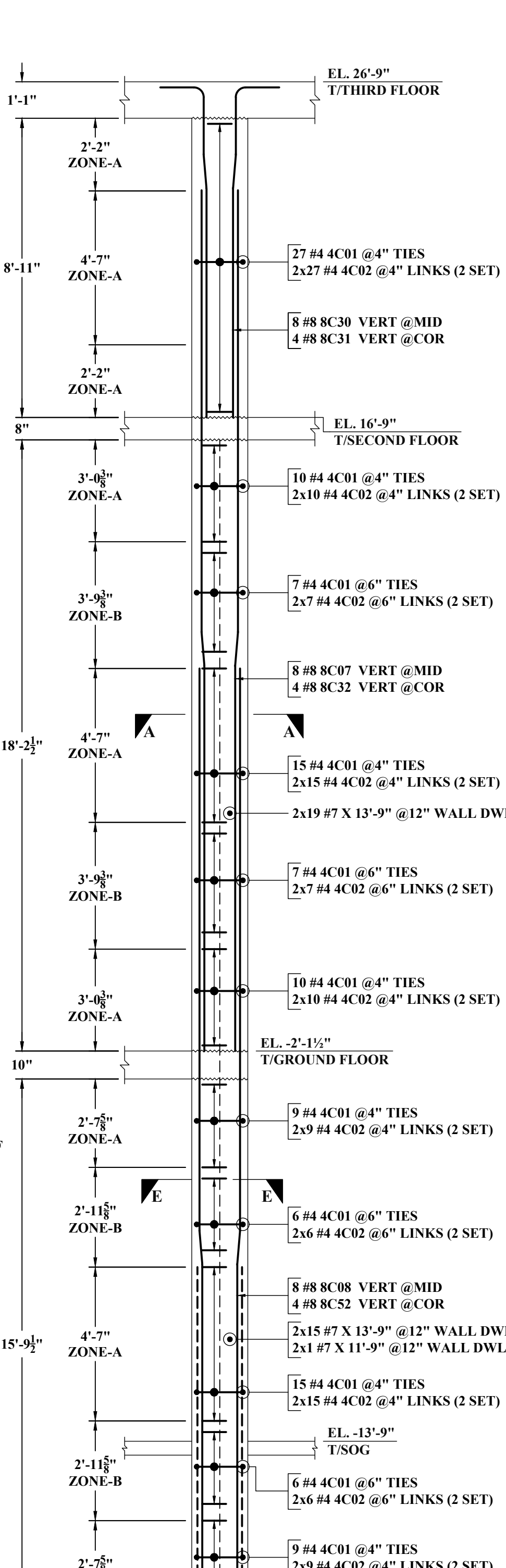
SCALE : 1/2"=1'-0"  
**PLAN VIEW : D-D**  
 REF : 4/S401



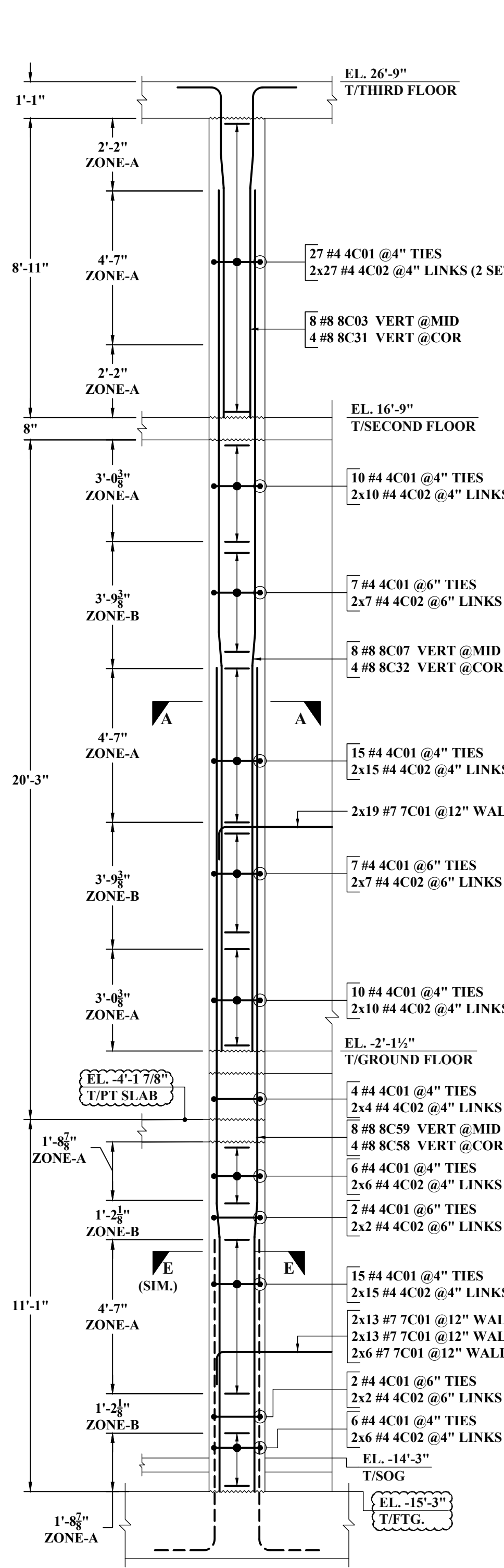
SIZE : 20"X20"  
**COLUMN - CC1P**  
 SCALE : 1/3"=1'-0"  
 REF : S200N & 5/S401



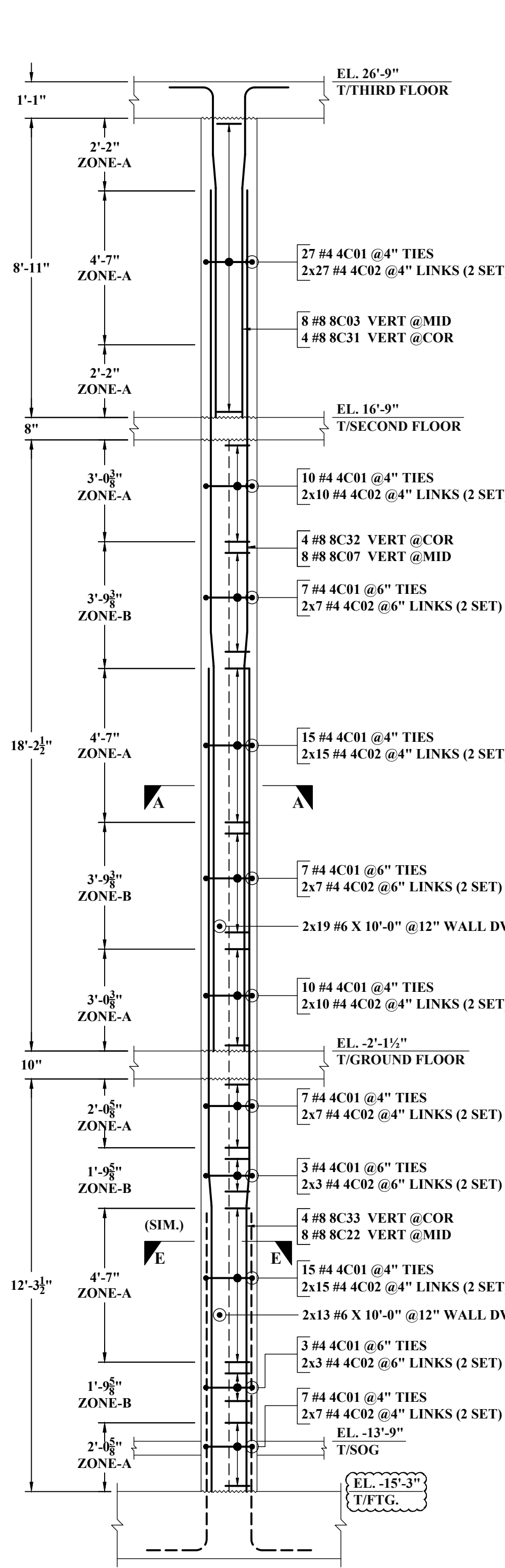
SCALE : 1/2"=1'-0"  
**PLAN VIEW : E-E**  
 REF : 4/S401



SIZE : 20"X20"  
**COLUMN - CC1Q**  
 SCALE : 1/3"=1'-0"  
 REF : S200N & 5/S401



SIZE : 20"X20"  
**COLUMN - CC1Q1**  
 SCALE : 1/3"=1'-0"  
 REF : S200N & 5/S401



SIZE : 20"X20"  
**COLUMN - CC1Q2**  
 SCALE : 1/3"=1'-0"  
 REF : S200N & 5/S401

(WALL)

SIZE	4000 PSI	
	TOP	OTHER
#3	24"	19"
#4	32"	25"
#5	40"	31"
#6	48"	37"
#7	70"	54"
#8	80"	62"
#9	91"	70"
#10	102"	79"

(COLUMN)

SIZE	5000 PSI	
	TOP	OTHER
#3	22"	17"
#4	29"	22"
#5	36"	28"
#6	43"	33"
#7	63"	49"
#8	72"	55"
#9	81"	63"
#10	91"	70"

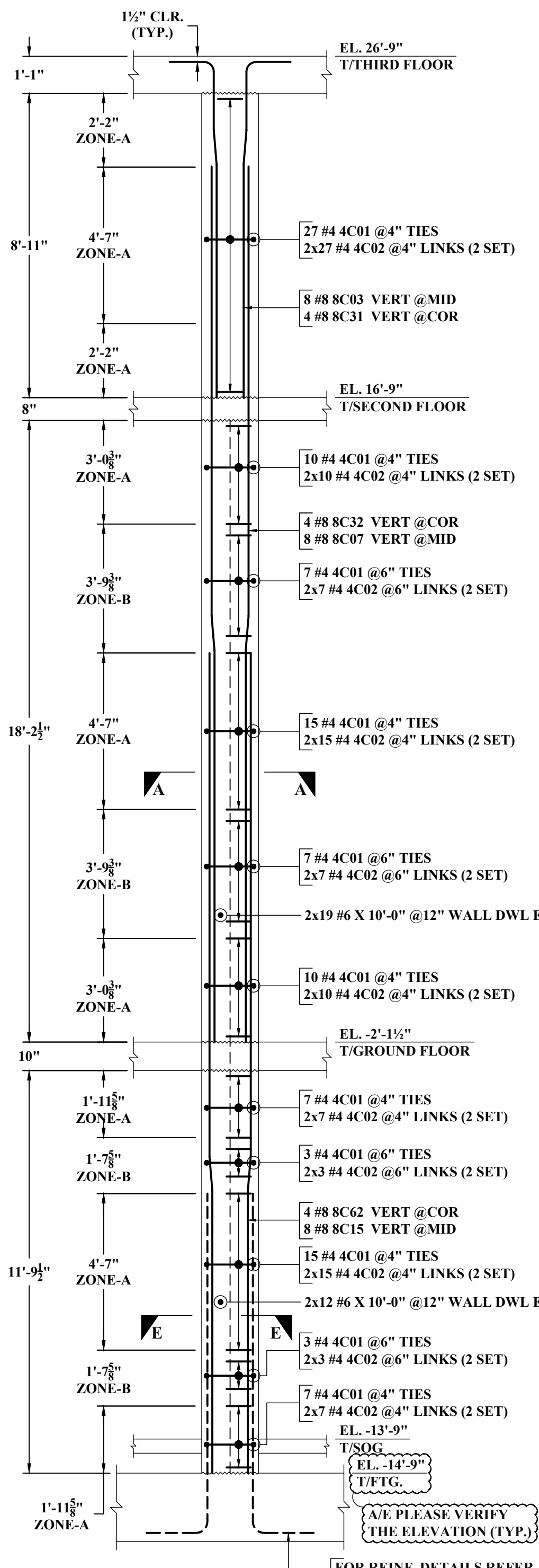
ABBREVIATIONS

ABBREVIATIONS	MEANING
BOTTOM	BOT
TOP/BOTTOM	T&B
VERTICAL	VERT
HORIZONTAL	HOR
EACH WAY	EW
EACH FACE	EF
INNER FACE	IF
OUTER FACE	OF
EACH SIDE	ES
DOWEL	DWL
DOWEL/VERTICAL	D/V
LONG WAY BAR	LW
SHORT WAY BAR	SW

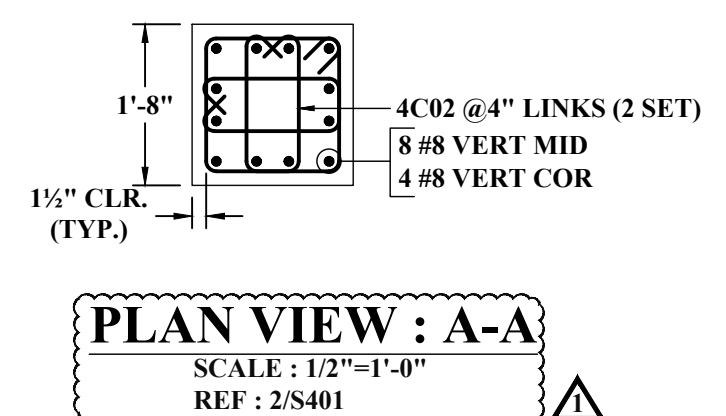
- NOTES:-**
1. TYPICAL CLEARANCES  
 A). TOP - 1/2"  
 B). TIES - 1 1/2"
  2. A/E PLEASE VERIFY THE ALL CLOUDED ITEMS
  3. PROVIDE FIELD CUT AS REQUIRED LOCATIONS
  4. BARS TO BE PLACED AT EQUAL SPACING U.O.N.
  5. TILT HOOK TO ACCOMMODATE THE COVER, IF NEED

**ALL BARS IN THIS DRAWING ASTM A615 GRADE 60 BLACK UNCOATED**

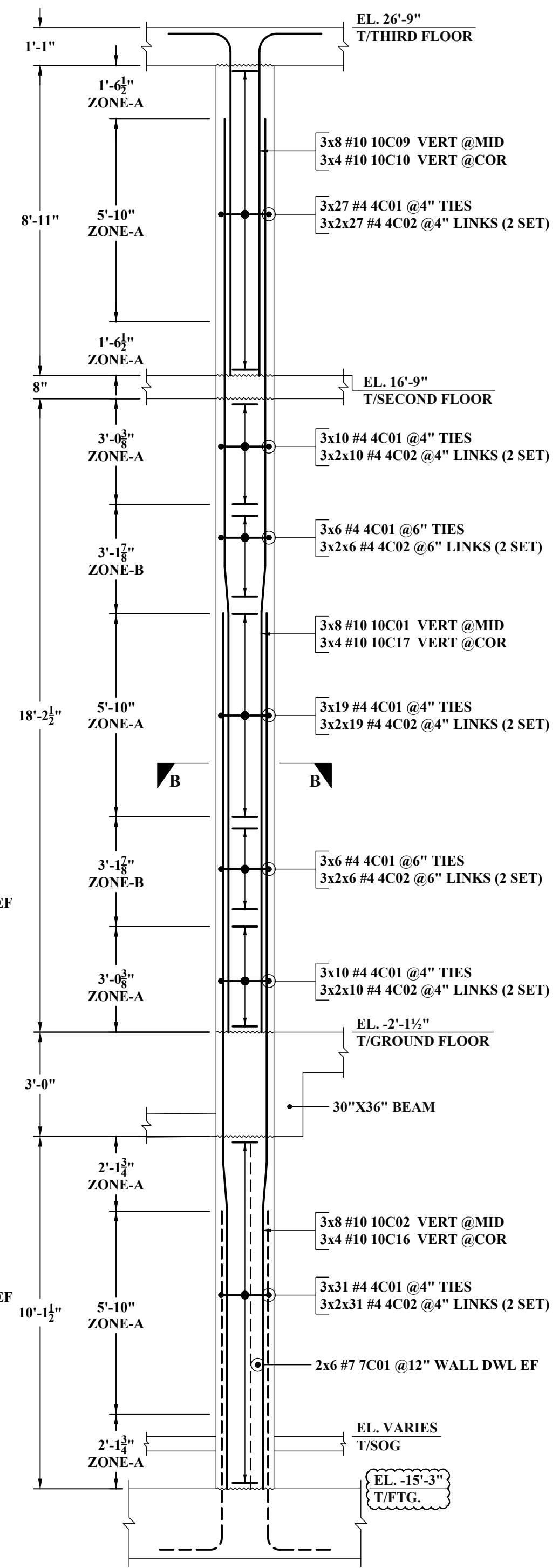
NOTE: REINFORCING STEEL PLACING DRAWINGS TO BE USED ONLY IN CONJUNCTION WITH CONTRACT DRAWINGS AND SPECIFICATIONS. ELEVATIONS & DIMENSIONS SHOWN ON THIS DRAWING ARE FOR VERIFICATION BY THE EOR OR FOR DETAILING PURPOSES ONLY AND SHOULD NOT BE USED FOR CONSTRUCTION UNLESS VERIFIED BY THE ARCHITECT, ENGINEER OF RECORD, OR CONTRACTOR.



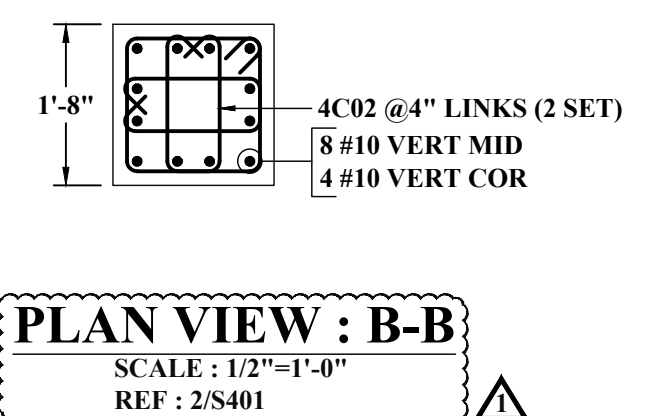
**COLUMN - CC1Q3**  
 SCALE: 1/3"=1'-0"  
 REF: S200N & 5/S401



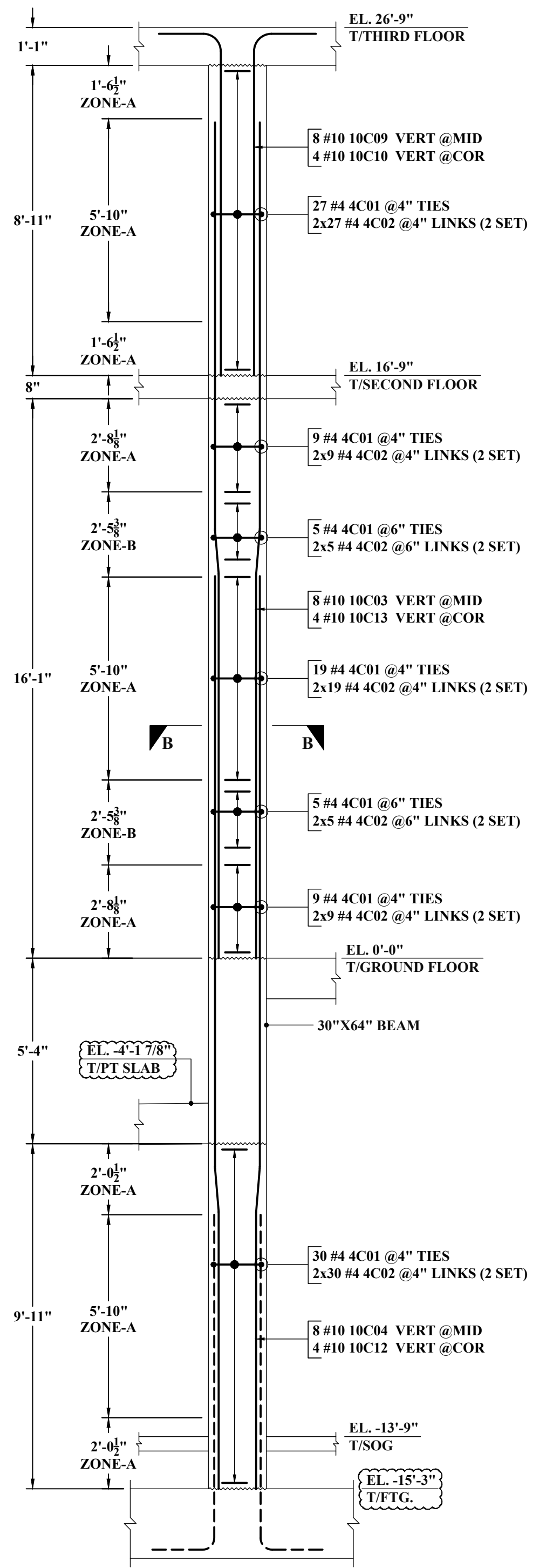
**PLAN VIEW : A-A**  
 SCALE: 1/2"=1'-0"  
 REF: 2/S401



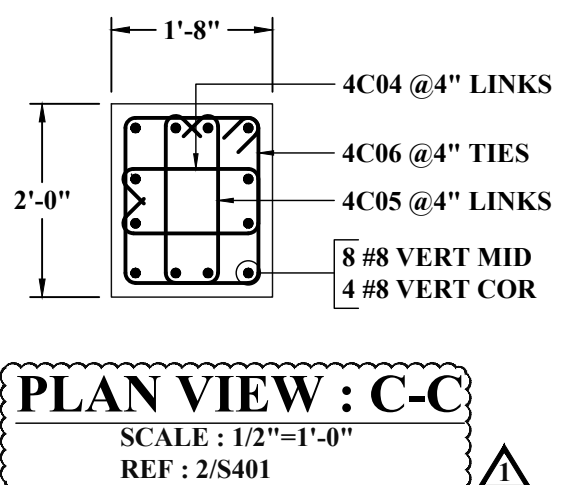
**COLUMN - CC2**  
 (3 LOCATIONS)  
 SCALE: 1/3"=1'-0"  
 REF: S200N & 5/S401



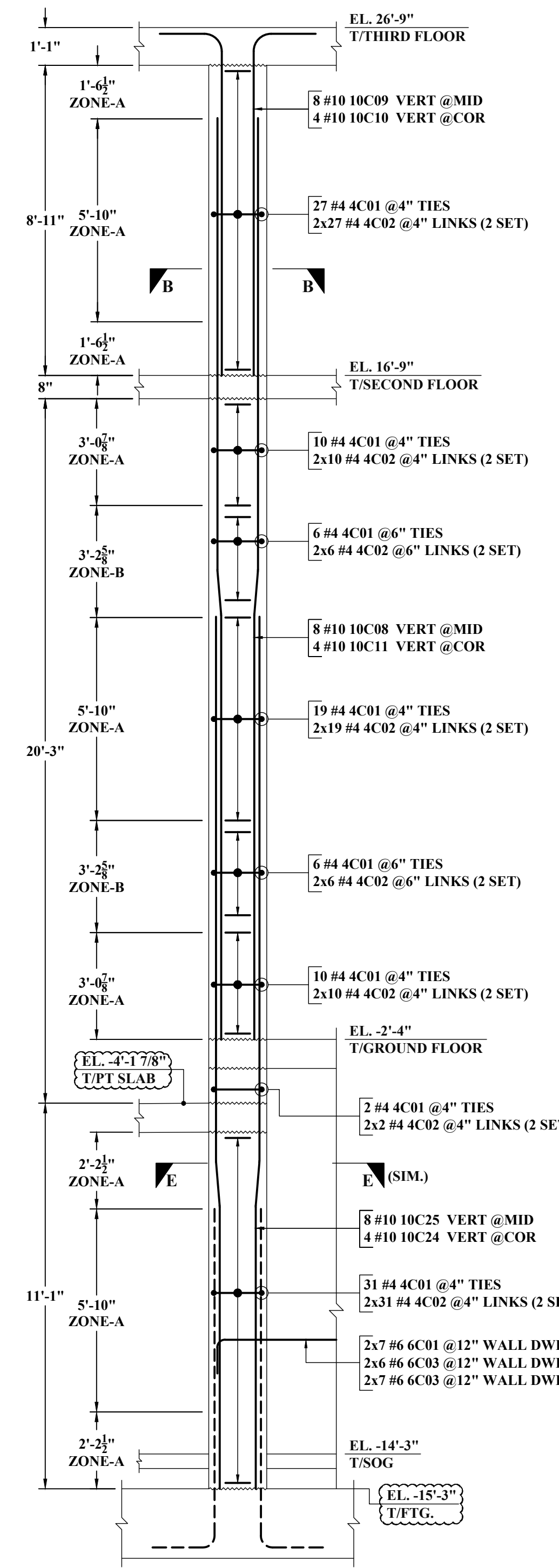
**PLAN VIEW : B-B**  
 SCALE: 1/2"=1'-0"  
 REF: 2/S401



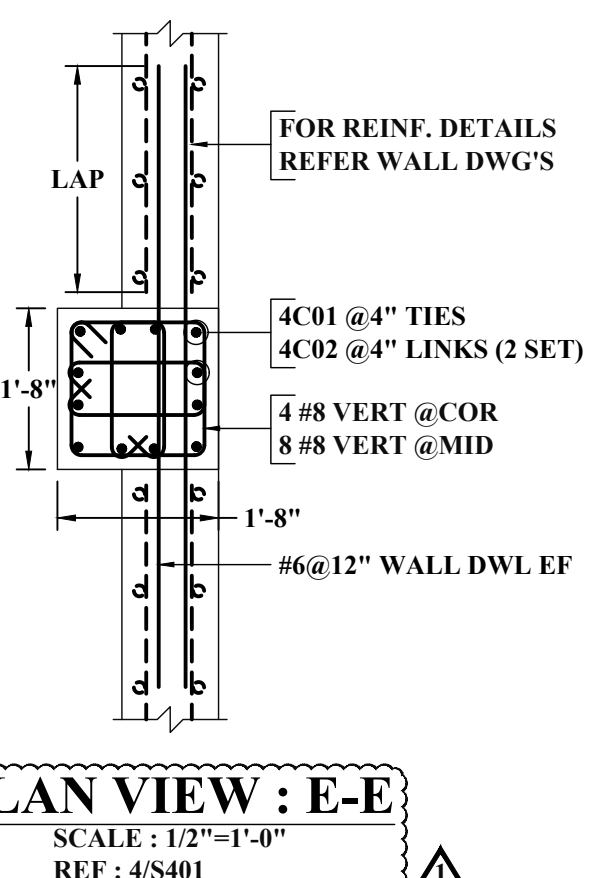
**COLUMN - CC2A**  
 SCALE: 1/3"=1'-0"  
 REF: S200N & 5/S401



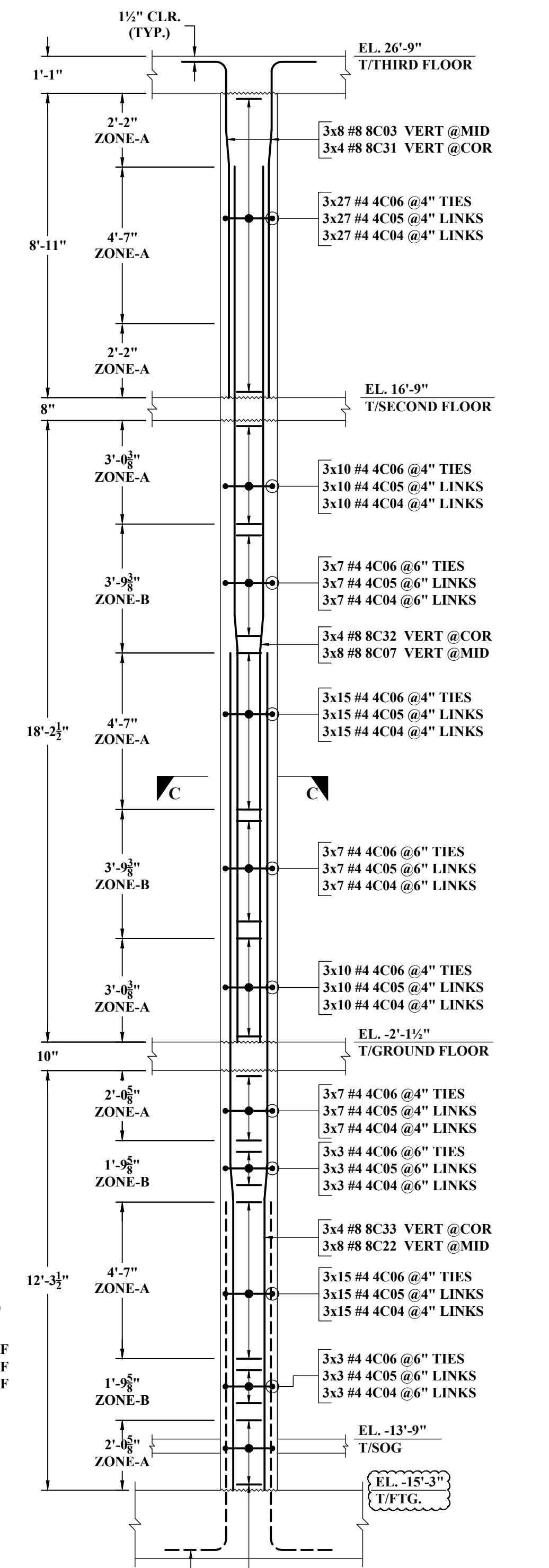
**PLAN VIEW : C-C**  
 SCALE: 1/2"=1'-0"  
 REF: 2/S401



**COLUMN - CC2B**  
 SCALE: 1/3"=1'-0"  
 REF: S200N & 5/S401



**PLAN VIEW : E-E**  
 SCALE: 1/2"=1'-0"  
 REF: 4/S401



**COLUMN - CC3**  
 (3 LOCATIONS)  
 SCALE: 1/3"=1'-0"  
 REF: S200N & 5/S401

(WALL)

SIZE	4000 PSI	
	TOP	OTHER
#3	24"	19"
#4	32"	25"
#5	40"	31"
#6	48"	37"
#7	70"	54"
#8	80"	62"
#9	91"	70"
#10	102"	79"

(COLUMN)

SIZE	5000 PSI	
	TOP	OTHER
#3	22"	17"
#4	29"	22"
#5	36"	28"
#6	43"	33"
#7	63"	49"
#8	72"	55"
#9	81"	63"
#10	91"	70"

ABBREVIATIONS

ABBREVIATION	MEANING
BOTTOM	BOT
TOP/BOTTOM	T&B
VERTICAL	VERT
HORIZONTAL	HOR
EACH WAY	EW
EACH FACE	EF
INNER FACE	IF
OUTER FACE	OF
EACH SIDE	ES
DOWEL	DWL
DOWEL/VERTICAL	D/V
LONG WAY BAR	LW
SHORT WAY BAR	SW

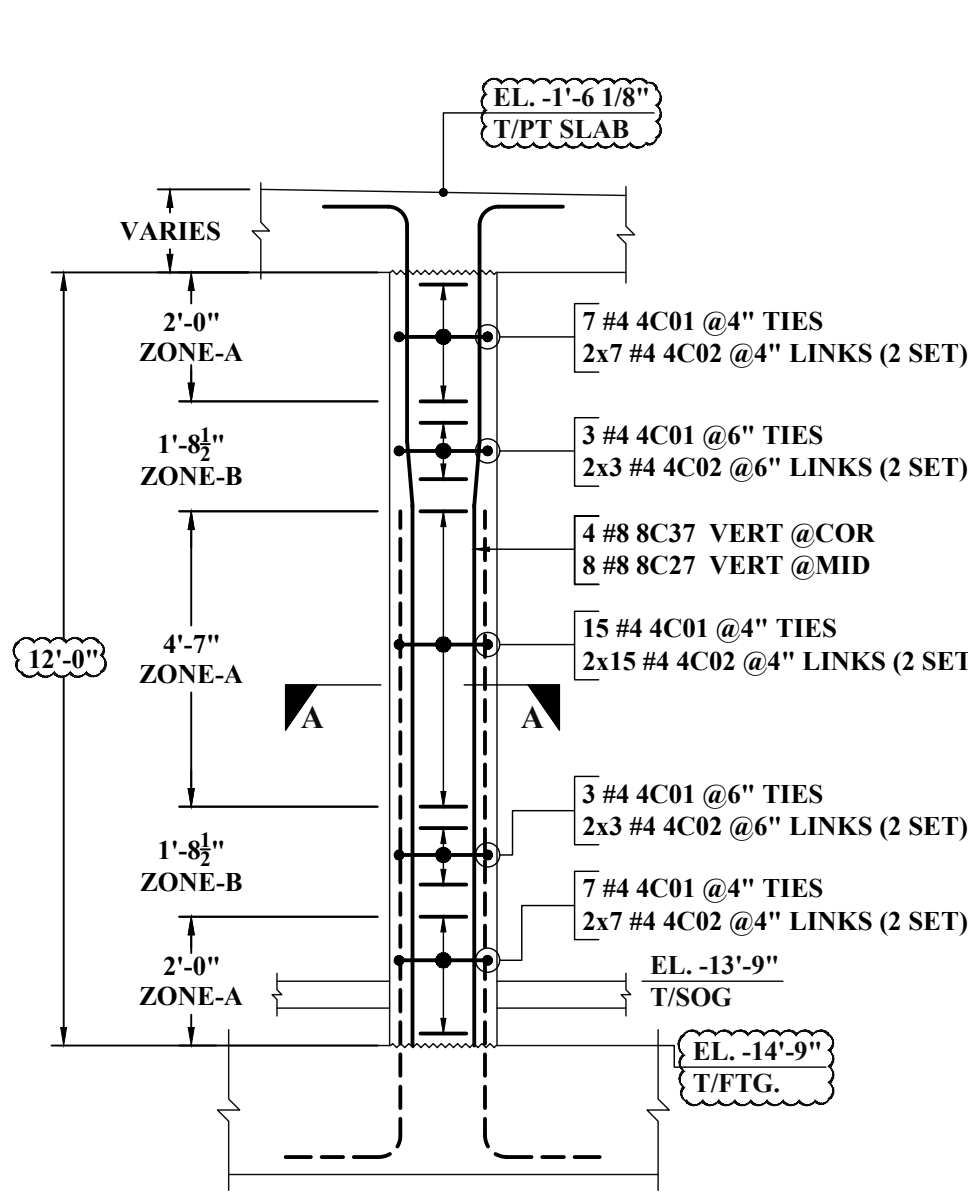
**NOTES:-**

1. TYPICAL CLEARANCES  
 A). TOP - 1/2"  
 B). TIES - 1/2"
2. A/E PLEASE VERIFY THE ALL CLOUDED ITEMS
3. PROVIDE FIELD CUT AS REQUIRED LOCATIONS
4. BARS TO BE PLACED AT EQUAL SPACING U.O.N.
5. TILT HOOK TO ACCOMMODATE THE COVER, IF NEEDED

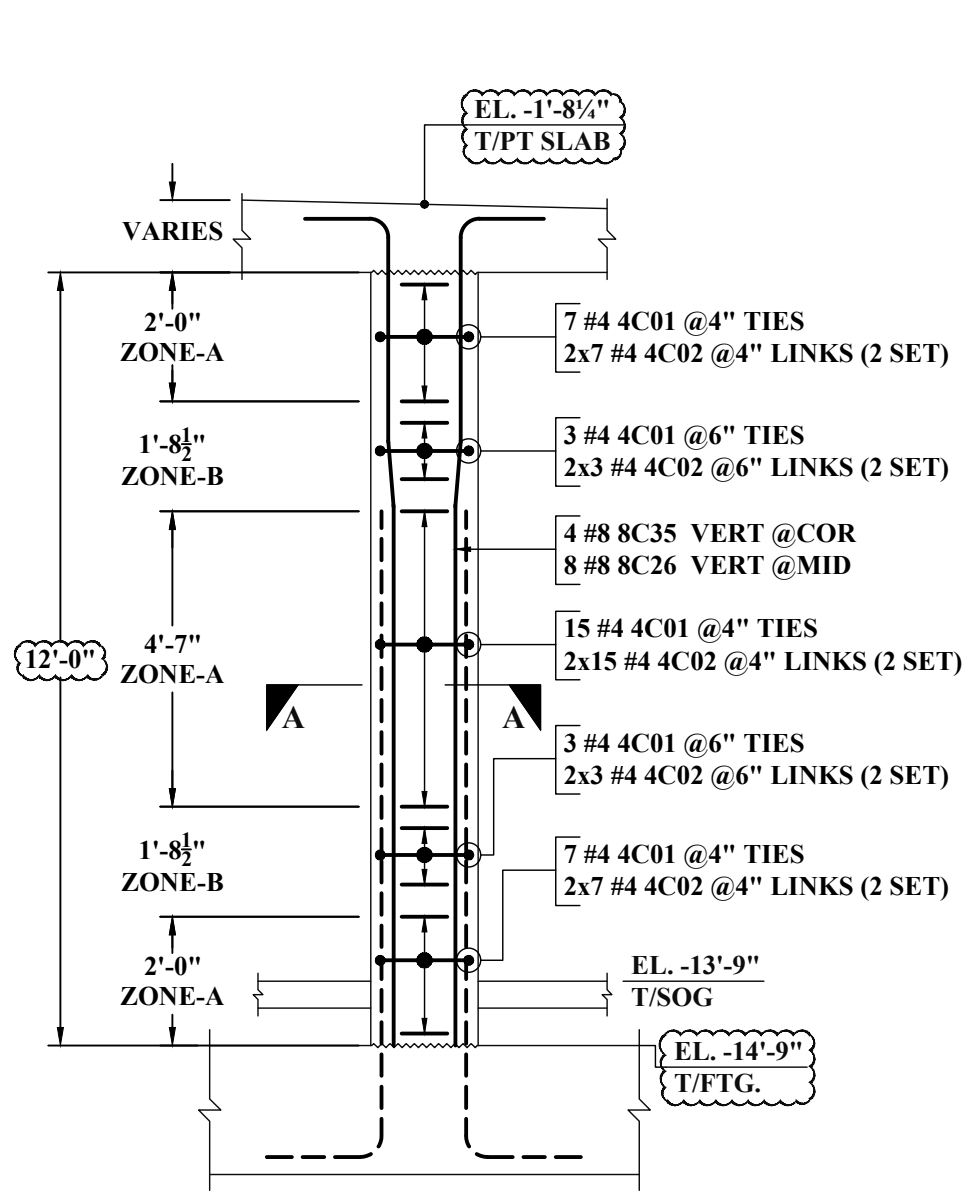
**ALL BARS IN THIS DRAWING ASTM A615 GRADE 60 BLACK UNCOATED**

NOTE: REINFORCING STEEL PLACING DRAWINGS TO BE USED ONLY IN CONJUNCTION WITH CONTRACT DRAWINGS AND SPECIFICATIONS. ELEVATIONS & DIMENSIONS SHOWN ON THIS DRAWING ARE FOR VERIFICATION BY THE EOR OR FOR DETAILING PURPOSES ONLY AND SHOULD NOT BE USED FOR CONSTRUCTION UNLESS VERIFIED BY THE ARCHITECT, ENGINEER OF RECORD, OR CONTRACTOR.

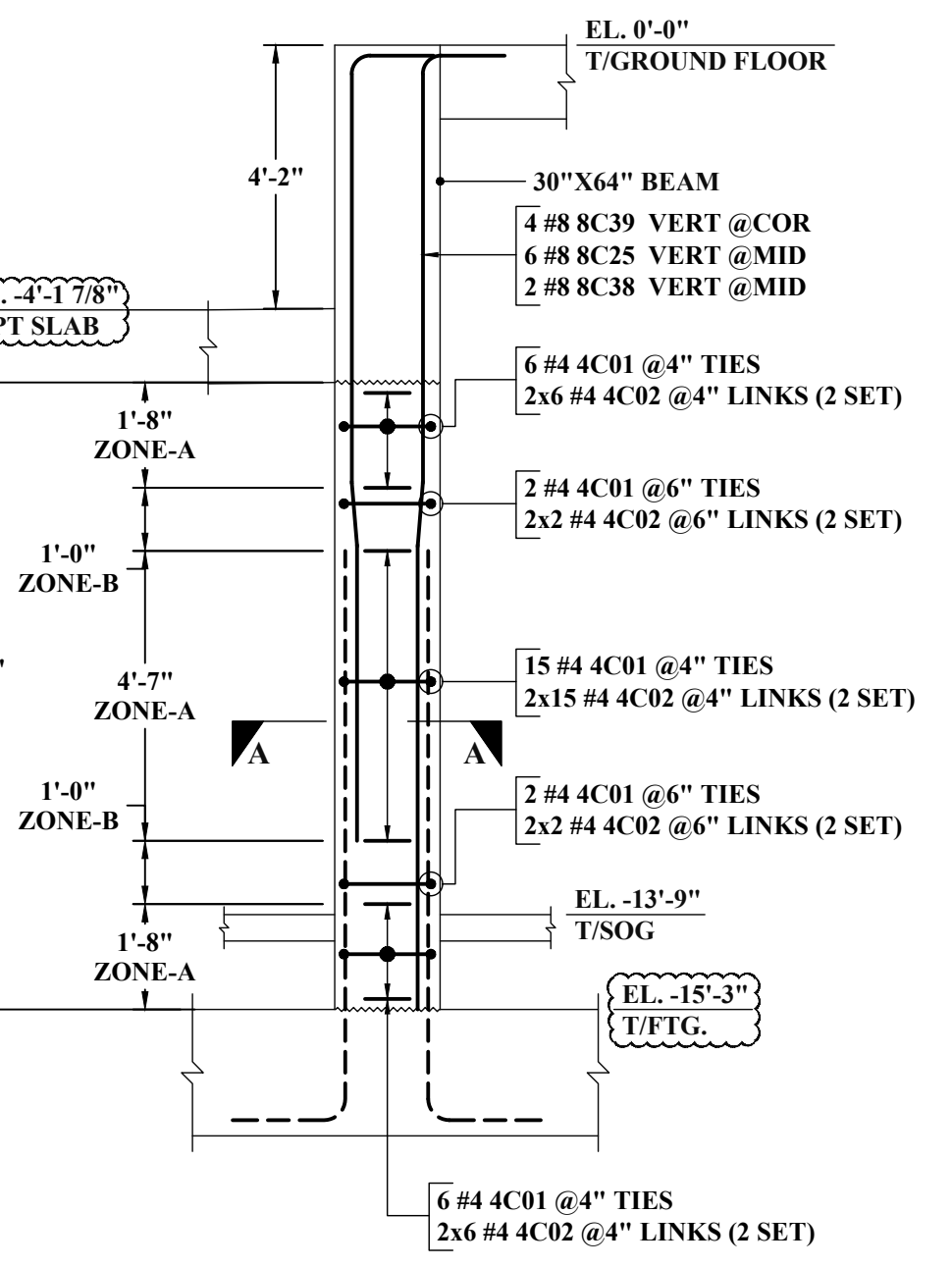




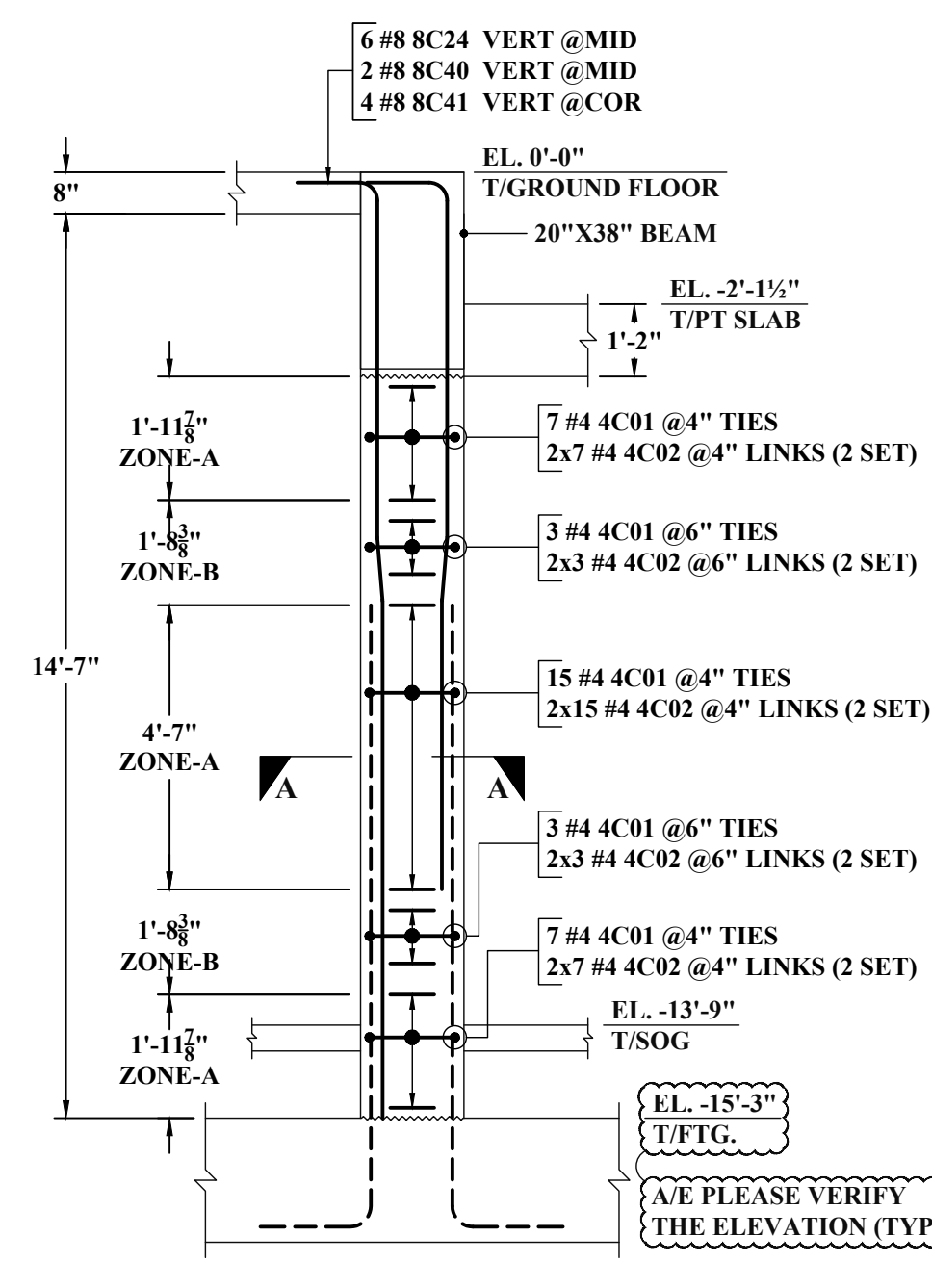
**COLUMN - CC5A**  
 SIZE : 20"x20"  
 SCALE : 1/3"=1'-0"  
 REF : S200N & 5/S401



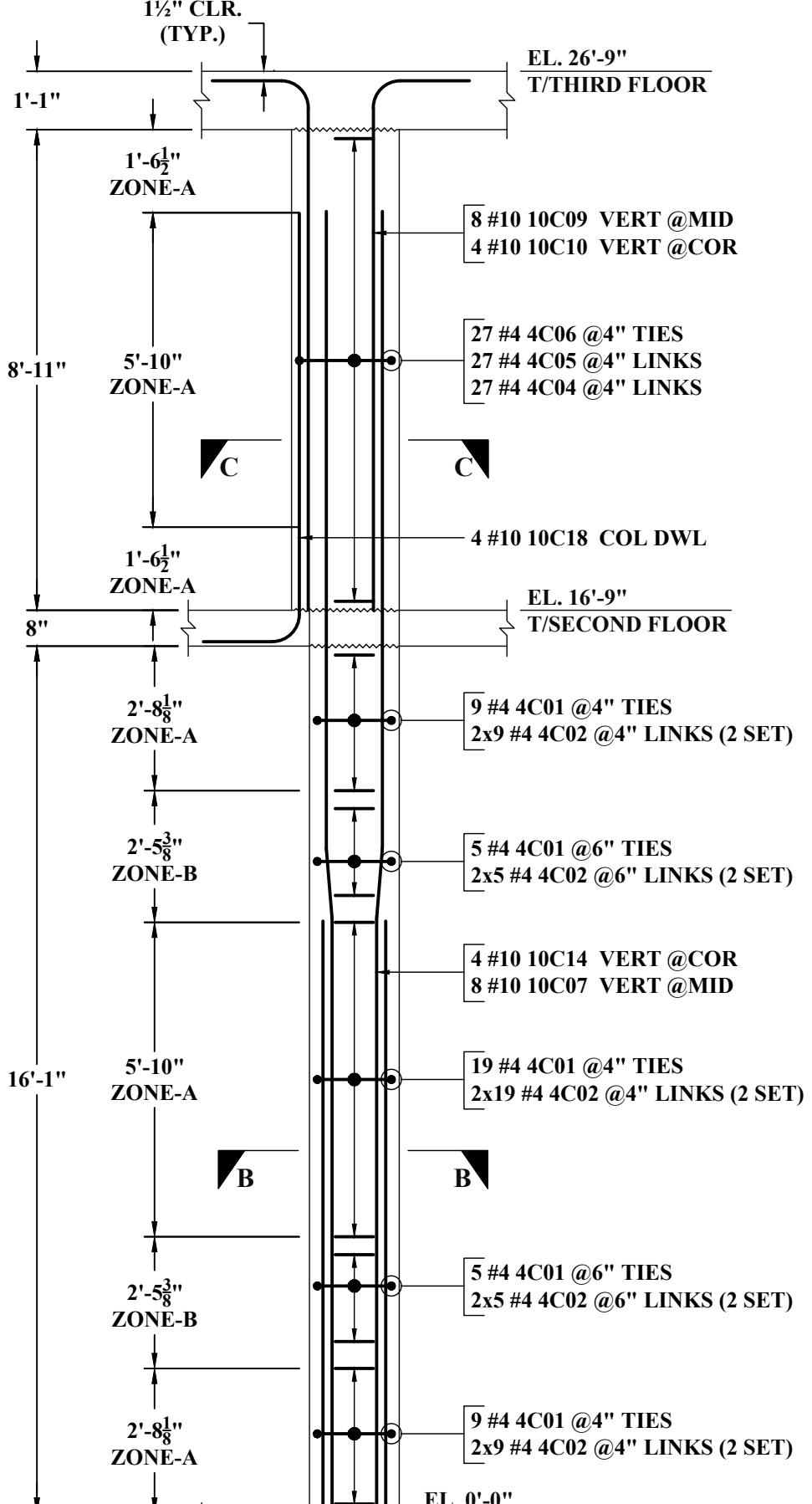
**COLUMN - CC5B**  
 SIZE : 20"x20"  
 SCALE : 1/3"=1'-0"  
 REF : S200N & 5/S401



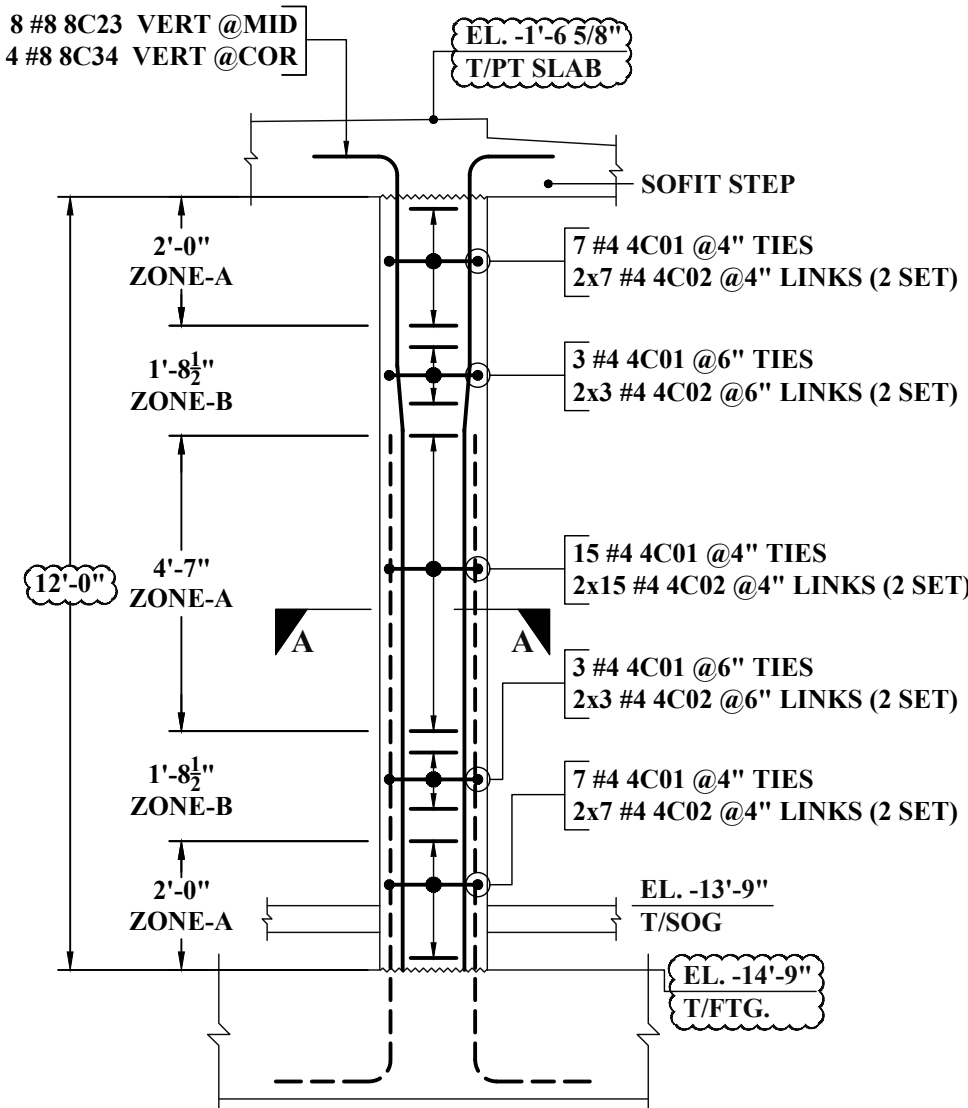
**COLUMN - CC5C**  
 SIZE : 20"x20"  
 SCALE : 1/3"=1'-0"  
 REF : S200N & 5/S401



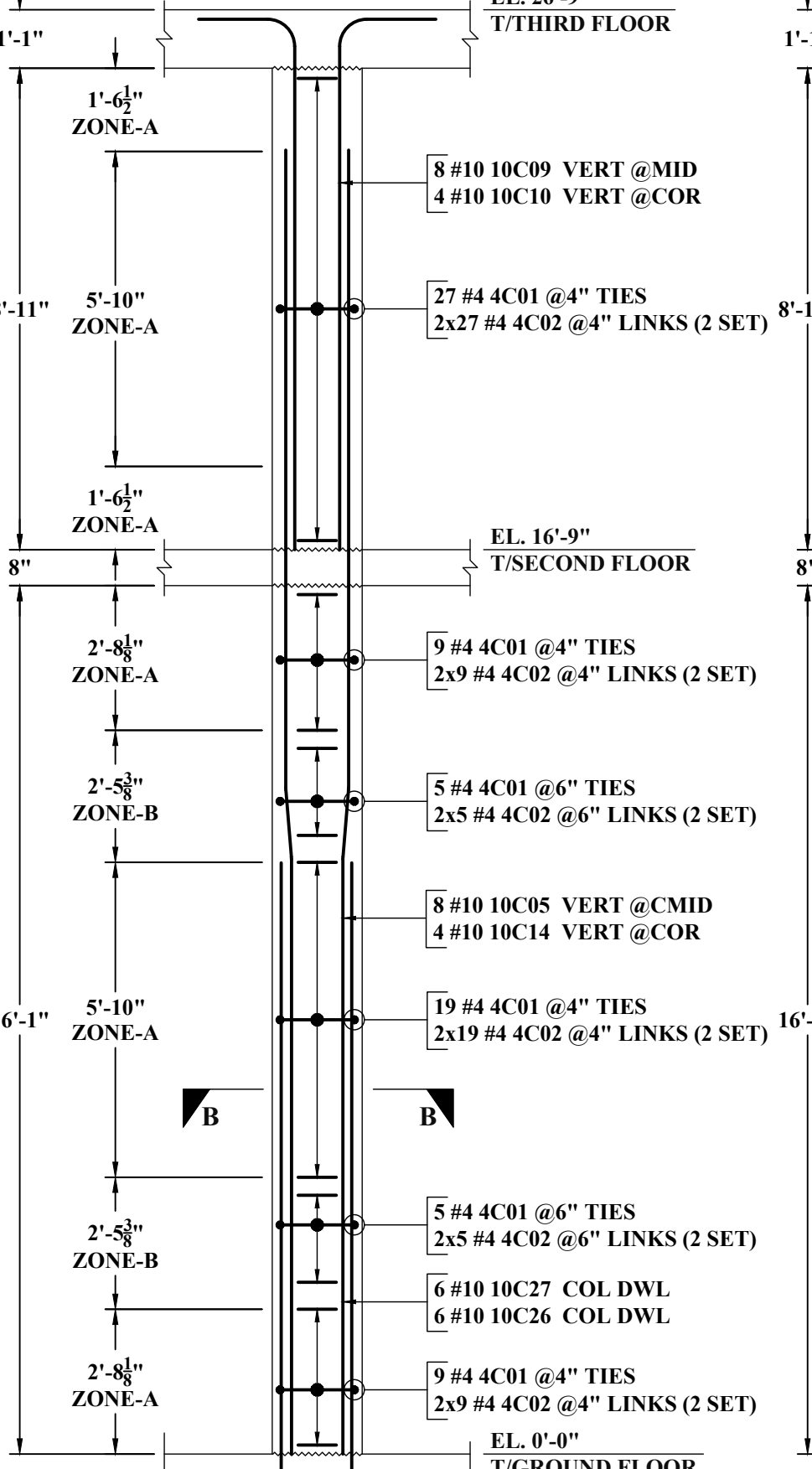
**COLUMN - CC5D**  
 SIZE : 20"x20"  
 SCALE : 1/3"=1'-0"  
 REF : S200N & 5/S401



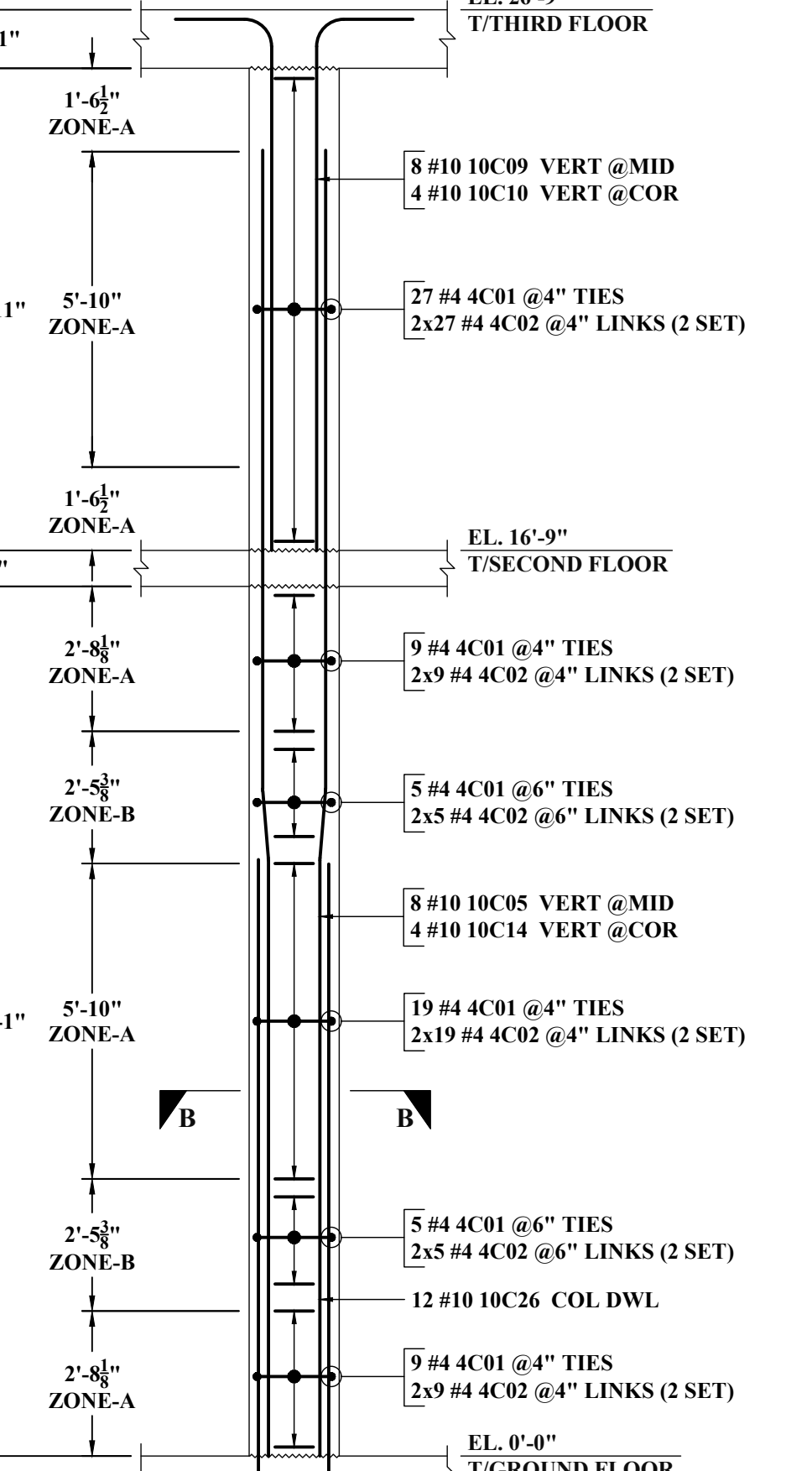
**COLUMN - CC7**  
 SIZE : 20"x20"  
 SCALE : 1/3"=1'-0"  
 REF : S200N & 5/S401



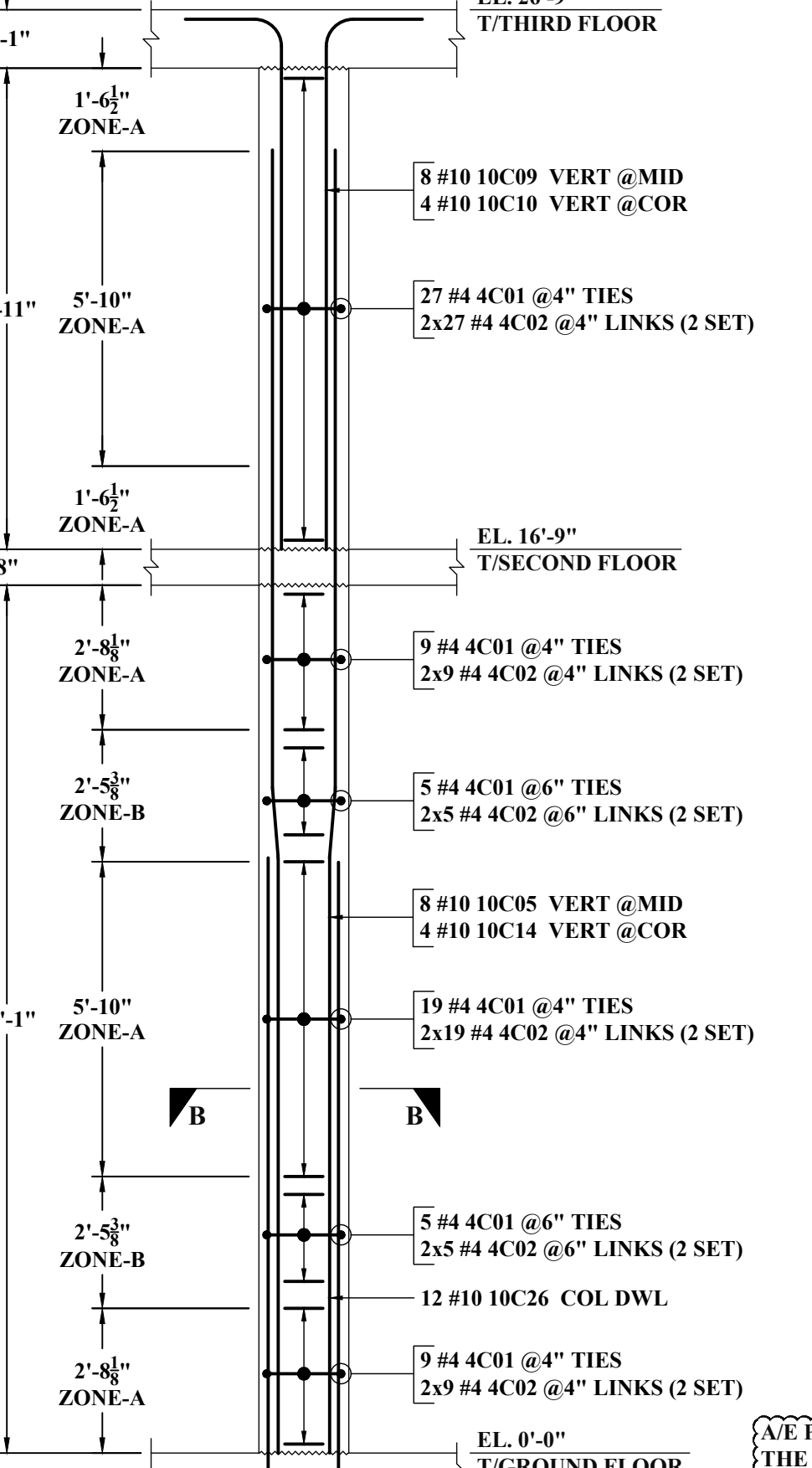
**COLUMN - CC5E**  
 SIZE : 20"x20"  
 SCALE : 1/3"=1'-0"  
 REF : S200N & 5/S401



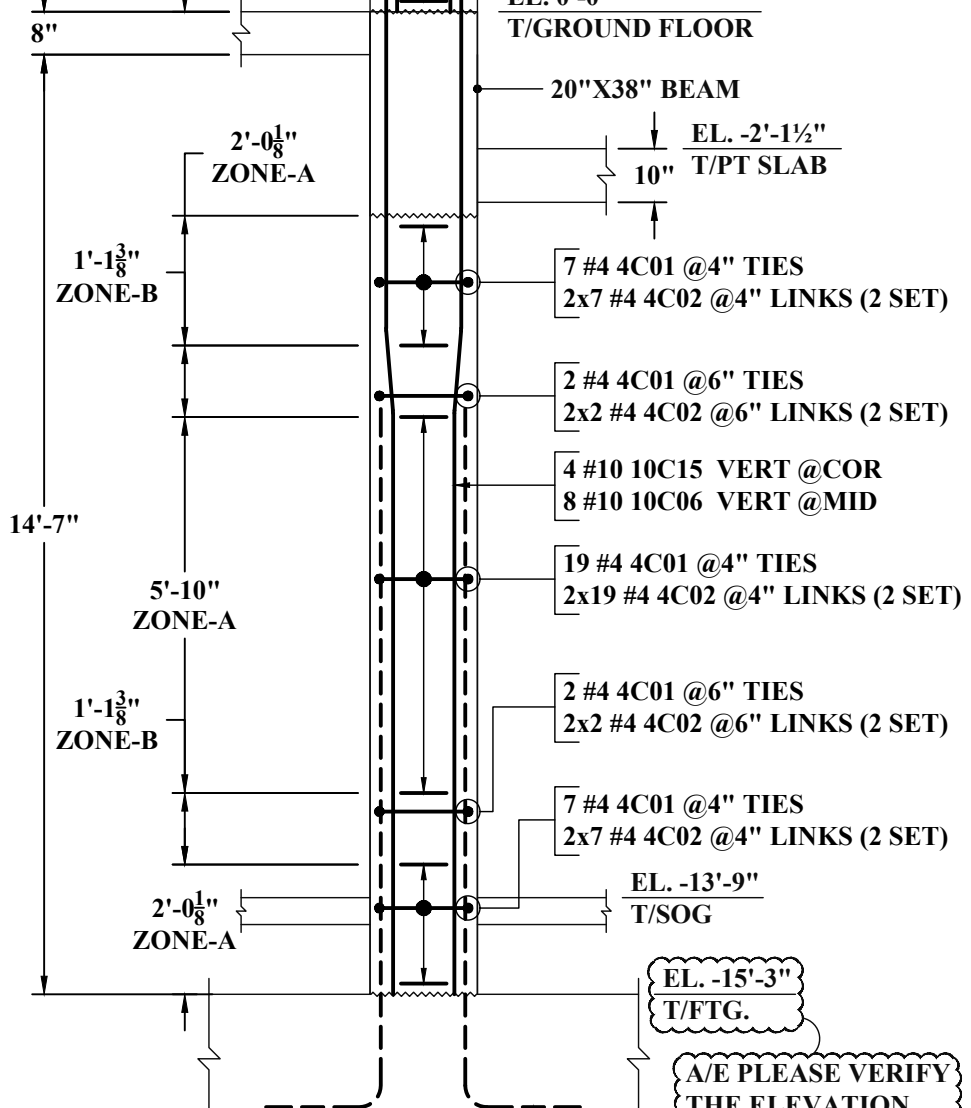
**COLUMN - CC6**  
 SIZE : 20"x20"  
 SCALE : 1/3"=1'-0"  
 REF : S200N & 5/S401



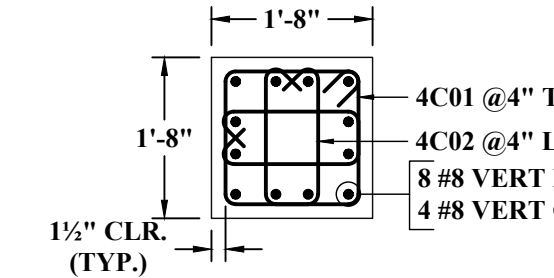
**COLUMN - CC6A**  
 SIZE : 20"x20"  
 SCALE : 1/3"=1'-0"  
 REF : S200N & 5/S401



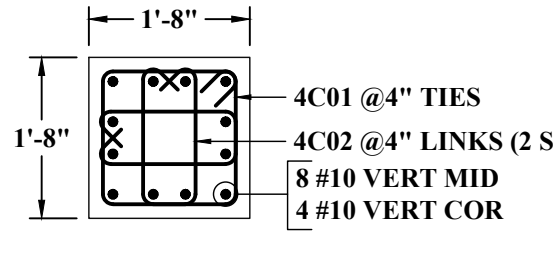
**COLUMN - CC6B**  
 SIZE : 20"x20"  
 SCALE : 1/3"=1'-0"  
 REF : S200N & 5/S401



**COLUMN - CC7**  
 SIZE : 20"x20"  
 SCALE : 1/3"=1'-0"  
 REF : S200N & 5/S401



**PLAN VIEW : A-A**  
 SCALE : 1/2"=1'-0"  
 REF : 2/S401



**PLAN VIEW : B-B**  
 SCALE : 1/2"=1'-0"  
 REF : 2/S401

(WALL)

LAP SCHEDULE (CLASS-B)		
REF: S5101A		
SIZE	4000 PSI	
	TOP	OTHER
#3	24"	19"
#4	32"	25"
#5	40"	31"
#6	48"	37"
#7	70"	54"
#8	80"	62"
#9	91"	70"
#10	102"	79"

(COLUMN)

LAP SCHEDULE (CLASS-B)		
REF: S5101A		
SIZE	5000 PSI	
	TOP	OTHER
#3	22"	17"
#4	29"	22"
#5	36"	28"
#6	43"	33"
#7	63"	49"
#8	72"	55"
#9	81"	63"
#10	91"	70"

ABBREVIATIONS

BOTTOM	BOT
TOP/BOTTOM	T&B
VERTICAL	VERT
HORIZONTAL	HOR
EACH WAY	EW
EACH FACE	EF
INNER FACE	IF
OUTER FACE	OF
EACH SIDE	ES
DOWEL	DWL
DOWEL/VERTICAL	D/V
LONG WAY BAR	LW
SHORT WAY BAR	SW

- NOTES:-**
- TYPICAL CLEARANCES  
 A). TOP - 1/2"  
 B). TIES - 1 1/2"
  - A/E PLEASE VERIFY THE ALL CLOUDED ITEMS
  - PROVIDE FIELD CUT AS REQUIRED LOCATIONS
  - BAR TO BE PLACED AT EQUAL SPACING U.O.N.
  - TILT HOOK TO ACCOMMODATE THE COVER, IF NEED

**ALL BARS IN THIS DRAWING ASTM A615 GRADE 60 BLACK UNCOATED**

NOTE: REINFORCING STEEL PLACING DRAWINGS TO BE USED ONLY IN CONJUNCTION WITH CONTRACT DRAWINGS AND SPECIFICATIONS. ELEVATIONS & DIMENSIONS SHOWN ON THIS DRAWING ARE FOR VERIFICATION BY THE EOR OR FOR DETAILING PURPOSES ONLY AND SHOULD NOT BE USED FOR CONSTRUCTION UNLESS VERIFIED BY THE ARCHITECT, ENGINEER OF RECORD, OR CONTRACTOR.

